

Welcome to the 41st Annual NQA Quilt Show

...showcasing tradition at its best...



Hall C, Greater Columbus
Convention Center
Columbus, Ohio — June 17-19, 2010

Here's the Buzz...



Wednesday, June 16

8:30 – 11:30 A.M. So You Think You Want to Be a Longarm Quilter?
12 Noon – 5 P.M. Registration open
1:30 – 4:30 P.M. Longarm Freehand Quilting for Beginners
5:30 – 9 P.M. The Preview Party – Dinner and Show Grand Opening

Thursday, June 17

8 A.M. – 5 P.M. Registration open
8:30 – 11:30 A.M. Classes
8:30 A.M. Panel Discussion: *Entering, Judging and Surviving the Show*
9 A.M. – 6 P.M. Show and Vendors open
10:30 A.M. Lecture: *Viewed with a Smile*
1:30 – 4:30 P.M. Classes
1:30 P.M. Lecture: *I Love the Fabric, But What Do I Do With It?*
3:30 P.M. Show floor – Silent Little Quilt Auction bids close
3:30 P.M. Lecture: *Less is More!*
7 P.M. The Thursday Night Gathering with Margaret J. Miller

Friday, June 18

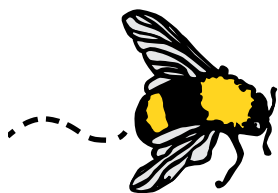
8 A.M. – 5 P.M. Registration open
8:30 – 11:30 A.M. Classes
8:30 A.M. Lecture: *Creativity – Developing Your Own Design Style*
9 A.M. – 6 P.M. Show and Vendors open
10 A.M. – 12 Noon The Friday Morning Medley Class
10:30 A.M. Lecture: *The Nancy Page Quilt Club*
1:30 – 4:30 P.M. Classes
1:30 P.M. Lecture: *So What Is Thread Painting All About?*
3:30 P.M. Show floor – Silent Little Quilt Auction bids close
3:30 P.M. Lecture: *To Border or Not To Border; That Is The Question*
6 P.M. The Friday Dinner followed by
7:30 P.M. The Grant Program Little Quilt Auction (open to the public)

Saturday, June 19

8 A.M. – Noon Registration open
8:30 – 11:30 A.M. Classes
8:30 A.M. Lecture: *What's Weird and Wacky, Old and New In The Sewing World*
9 A.M. – 6 P.M. Show and Vendors open
10:30 A.M. Lecture: *Creating Captivating Color in Our Quilts*
12 Noon NQA Annual Meeting
1:30 – 4:30 P.M. Classes
1:30 P.M. Lecture: *Tell Me About the Longarm Quilting Business*
3:30 P.M. Show floor – Silent Little Quilt Auction bids close
**All fee and registration information for lectures,
classes and food events inside this brochure**



**41st Annual NQA Show Poster featuring
Rebecca Barker artwork available at the Show!!**



Welcome

The National Quilting Association, Inc. welcomes you to the **41st Annual Quilt Show!** Once again the bee is buzzing about what a great show awaits you!

Our show home in the C-pod of the Greater Columbus Convention Center will feature 400+ competition quilts, special exhibits, classes, lectures, an extensive vendor mall, and special events. The Convention Center is surrounded by lots of convenient parking for all.



Joining our special theme exhibit of **Tree Quilts** are the **NQA SewBatik Challenge Quilts** (*Through the Trees...*) plus **Fibrations**, an art quilt exhibit from the members of Studio Art Quilt Associates.

Ohio and the Columbus area are a "hot bed" of quilting destinations, plus lots of great food, shopping, North Market, and galleries. Check page 21 for a listing of places to visit.

Once again, Rebecca Barker has created the artwork for our show poster. This year a landscape featuring the theme of trees was requested and, as always, Rebecca produced a wonderful result. Signed-by-the-artist copies of this very special design will be available at the show. Remember, they disappear fast!

As in previous years, you are invited to "bee" a part of our special theme exhibit. Check "bee"low for details!

Come back to Columbus for our 2010 NQA "Family Reunion." Join old friends and new as we celebrate quilts together!

Volunteer Opportunities

The success of our NQA show relies on the good will of volunteers – our Helping Hands; in truth, it just doesn't happen without you! We need volunteers in many capacities, especially to white glove and assist our show attendees by sack sitting, as well as provide security on the show floor. This is a great way to support NQA.

All Helping Hands working one shift will receive a special pin, a small gift provided by our wonderful vendors, and a chance to win a quilt made especially to thank the volunteers. Helping Hands who work a minimum of 4.5 hours (two shifts) will receive a priority registration form for the 2011 show in addition to other items. This form will permit registration two weeks before regular registration begins. It is our way of saying thank you to those who help to make the Annual Show possible.

If you can help, **please fill out the Volunteer Form on page 23.** If you have questions or need more information, please call the NQA office at 614-488-8520 or e-mail **volunteers10@nqaquilts.org**. The Volunteer Coordinator will send you an acknowledgement and instructions several weeks before the show. Also, if you would like to assist as a class aide in a class you are taking, check the box on the Registration Form.

We appreciate your Helping Hands!

www.nqaquilts.org/2010show
www.experiencecolumbus.com

Share Your Tree Quilt

This year we celebrate the mighty tree and all of its forms in quilt designs. Have you made a pieced maple tree or appliquéd a family tree complete with history? Did you try Broderie Perse or paper piecing to create your tree? Have you collected quilts, antique or new, that feature trees? You are invited to share one of these beauties with the thousands of quilt lovers who will be attending the show. Any size, up to 100" wide on the top side, is welcome. The quilts will be featured in the exhibit hall, and the owners will receive a special participation ribbon, as well as a commemorative label for the quilt. These quilts are not judged.

A total of 40 quilts will be accepted for this exhibit. The entry form is included in the registration brochure and on the website at www.nqaquilts.org.



Bus Tours are most welcome at the NQA Quilt Show. Please contact the Show Director's Assistant, Glen Taylor, at **bustours@nqaquilts.org** or 480-683-2331 for details. Group admission rates are available for parties of 30 or more.

Special Events

Numbered events require pre-registration. CC = Convention Center; HR = Hyatt Regency

#501 So You Think You Want to be a Longarm Quilter?

Wednesday, June 16 \$75 CC 120-121

Longarm class with Linda Taylor beginning at 8:30 A.M.

Where do we start- how do we end- and what is supposed to happen in-between? Linda carefully shows how the longarm quilting process is completed efficiently. Techniques covered in this class include proper quilt setup, basic pantograph quilting, freehand meandering, basting for hand quilters, and an overall view of why the longarm machines are so efficient. If you have been dying to try one of the machines, here is your chance to do so under expert direction.

Gammill longarm classes are hands-on; limited to 2 students per head

#502 Longarm Freehand Quilting for Beginners

Wednesday, June 16 \$75 CC 120-121

Longarm class with Linda Taylor beginning at 1:30 P.M.

Work on a petite heirloom sampler with a variety of meandering and stippling techniques. Linda shows you how to fill up the sashing with easy basic designs and gives you a good basic understanding of how to do a feathered medallion.

Gammill longarm classes are hands-on; limited to 2 students per head

#503 The Preview Party *

Wednesday, June 16 \$30 CC; Ballroom 1

Cash bar opens in Hall C Foyer at 5 P.M.

Seating will begin at 5:20 P.M.

Join with your fellow quilters for a wonderful evening. Meet at the cash bar in the Hall C Foyer, just outside the Ballroom. Dinner will be served. The major award winners for 2010 will be announced. Then go across the Foyer and into Hall C to enjoy two hours of beautiful quilts and vendor mall shopping – all just for you. A great way to start your 2010 show experience!

#600 2-Day Introduction to Quilt Judging

Thurs, Fri- 6/17, 18 8:30-11:30 A.M. + 1-5:30 P.M.

This 15-hour seminar presents an in-depth study of the judging process, including duties and responsibilities, ethics, specific criteria for evaluating workmanship and design, defining categories, and awards. Comment sheets, contracts, and other paperwork will be discussed, as well as the role of aides and scribes. This seminar will provide important information for those interested in judging, sponsoring, or working behind the scenes of a judged show. (See class listings.)

**Please Note: This seminar is an education workshop separate from the NQA Judges' Certification Program. Although the seminar provides valuable information to those judges who plan to pursue certification, NQA judge's credentials are not earned with completion of this seminar nor is it required for certification.*

#504 The Thursday Night Gathering *

Thursday, June 17 \$34 HR; Franklin

Cash bar opens in ballroom lobby at 6:30 P.M.

Doors will open for seating at 6:50 P.M.

Spend an evening enjoying the pleasant company of friends – old and new. Meet at the cash bar just outside the ballroom, and then, as befits a quilter's gathering, we'll enjoy a fabulous meal and count the calories some other day! Our very special speaker for The Gathering is Margaret J. Miller. Join with Margaret to "Look Ahead" and take a look at "the big picture" of how quilting fits into — and fuels — our lives. Many old and new quilts (real quilts!) made by Margaret illustrate the lecture. Don't miss this special evening!

#724 The Friday Morning Medley Class

Friday, June 18 \$15 CC; C210-212

10 A. M. - 12 Noon

Presenting a medley of talented teachers sharing tricks of the trade in a two-hour demonstration-packed session. Move from table to table and gather lots of information to add to your quilting skills and sewing knowledge. Whether you prefer traditional or innovative, you will find topics of interest. All registrants receive a booklet recapping each demo.

Bobbie Bergquist - Marbling on Shaving Cream

Karen Blocher - Blue Ribbon Binding

Cindy Casciato - Fabulous Fat Quarter Jacket

Cindy Erickson - Fabric Postcards

Kathy Lichtendahl - Fabric Painting with Dye-Na-Flow

Jennifer Perkins - Quilt Restoration

Pam Seip - Taming the Bias Shrewdly

Molly Waddell - Cathedral Windows

#505 The Friday Dinner *

Friday, June 18 \$30 HR; Union Room

Cash bar opens in ballroom lobby at 5:30 P.M.

Doors will open for seating at 5:45 P.M.

What a great way to get "in the Auction mood!" Relax with friends, enjoy a fine meal, and view the quilts for the live auction. You're most welcome to join us for dinner even if you're not planning to stay for the Auction fun. And you're most welcome to attend the Auction, even if you don't come to the dinner!

The Grant Program Little Quilt Auction

Friday, June 18 7:30 P.M. HR; Union Room

Doors open at 7 P.M. for those not attending the dinner

Cash bar will be available

The Little Quilt Auction is always a much anticipated highlight of the NQA Annual Show. All the quilts are on display at the show and you have the chance to bid on some during the daily Silent Auctions. Now join us and our fabulous auctioneer, Doug Leith, for the live event! Come participate in a fun-filled evening that directly funds the NQA Grant Program. And learn more about Doug – our honorary quiltmaker – at his website, www.leithauctions.com. We are so fortunate to have his commitment to our fundraising.

The NQA Annual Meeting

Saturday, June 19 12 Noon – 1 P.M. CC; C210-212

Join us for the meeting and catch up on all things NQA. For your convenience, a box lunch may be ordered for this event (see Registration Form) or you are welcome to bring along something from the snack bar or food court.

Lunch (delivered to the meeting room) is a turkey wrap, veggie wrap, or Mandarin chicken salad; drink and cookie. This must be ordered on the registration form.

***Please Note:** Any special requests regarding food at show special events **MUST** be processed through the NQA Show Director, Diane Pitchford (showdirector@nqaquilts.org or 480-390-9900), before show week. Requests made to any entity other than NQA cannot be honored.

Classes

All classes will be held in the C-pod rooms of the Greater Columbus Convention Center.

Classes will be filled on a "first-come, first-served" basis. Confirmations will be mailed as registrations are received and processed. This brochure contains most supply lists – **note** that some will be mailed and some ask you to contact the teacher. You are always welcome to check teacher Web sites. **Note** any kit fees. **Also note** which classes require you to **bring your own machine (YM)** or which have **machines provided (M)**. Hand and design classes are indicated by (H) or (D). Levels indicate minimum skills necessary.

Class project photos can be found at www.nqaquilts.org/2010show.

Class times:	Morning	8:30-11:30 A.M.
	Afternoon	1:30-4:30 P.M.
	Full day	8:30-11:30 A.M. + 1:30-4:30 P.M.

Wednesday, June 16

#501 SO YOU THINK YOU WANT TO BE A LONGARM QUILTER? \$75

Linda Taylor Morning All levels

Please see class description on page 3.

Kit fee: \$20. Kit includes small quilt prepared and ready to quilt, thread, large drawing pad and pen, handout for class project, small scissors for cutting threads and book or DVD to go along with the class.

All Gammill longarm classes are hands-on; 2 students per head max.

#502 LONGARM FREEHAND QUILTING FOR BEGINNERS \$75

Linda Taylor Afternoon Beginner

Please see class description on page 3.

Kit fee: \$20. See description in #501.

All Gammill longarm classes are hands-on; 2 students per head max.

Thursday, June 17

#600 2-DAY INTRO TO QUILT JUDGING \$150 (NQA member); \$175

Klaudeen Hansen, Anita Shackelford

Two-day class (Thurs and Fri) 8:30-11:30 A.M. + 1-5:30 P.M.

Please see class description on page 3.

Supplies: Note-taking materials; current resume, including any quilt-related teaching or judging experience; 1 large and 2 small quilted pieces (wall quilts or garments) to be used in mock judging situation (bring quilts that are less than perfect...).

#601 THREAD PAINTED LANDSCAPES (M) \$55 (NQA member); \$65

Nancy Prince Full day All levels

Using my anyone-can-do-it approach, you will learn how simple thread painting is. A zigzag or straight stitch are the only stitches necessary to create amazing thread painted designs. No artistic skill is needed so come join us for a day full of fun. Simple designs have been selected to boost your confidence right away.

Supplies: Please see www.nancyprince.com/Workshops_Lectures.html

#602 PIECED BASKETS (M) \$55 (NQA member); \$65

Sally Collins Full day Confident Beginner

This class will focus on precision sewing, quality workmanship and multiple half-square triangle techniques to create a lovely basket block in two different sizes (1-7/8" and 3-1/8"). Students can choose either one or both sizes, depending on their skill level. Class time is spent between lecture, explanation, demonstration and student sewing time. A handout for the project is included.

Supplies: 8" sq. batting, fleece, or flannel to lay out your work; long fine pins (1-3/8" x .5mm) or finer; seam ripper; appropriate color thread; rotary cutter, mat (usual mat and a smaller sub-cutting mat if you have one), and rulers (I use a 3" x 18" Omnigridd ruler with a fine, continuous black line 1/8" grid and a 4" sq. Omnigridd with the same 1/8" grid); notepaper and pencil; marking pencil, pen or chalker you can see on your fabric; scissors; basic sewing supplies; Fabric - 1/4 yd. background for

baskets; 8" sq. of one or two basket fabrics (tone on tone or small print). If you are unsure of your colors and/or fabrics, just bring a fabric that contrasts with the background); *1/4 yd. total for side triangles and alternate blocks; *1/4 yd. each border fabric; backing 13" x 16"; batting 13" x 16"; *1/4 yd. binding. *Not needed for class but you can bring them if you have questions.

#603 INTRO TO MACHINE QUILTING (M) \$55 (NQA member); \$65

Sarah Ann Smith Full day All levels

Machine quilting is fun, and it is more than using your machine to stitch your quilt sandwich together. The first part of the day is lecture to learn what you need to know for hassle-free machine quilting. Later in the morning begin the day's practice using the walking foot and the free-motion (darning) foot to quilt a sampler of patterns.

Supplies: Glasses or reading glasses, if you use them! Comfortable clothing; Marking tool(s) - bring what you have; Safety pins for basting your quilt sandwich, if you have them (if not, use straight pins for the class); Ruler - at least 12" long, 3" wide; Sewing machine needles - Topstitch needles are best - sizes 10, 12 or 14; Scissors, thread snips, seam ripper; Gloves - optional, but recommended. My favorite thing for quilting is Machingers gloves. 4 pieces of white or light-colored fabric 18 x 18 inches; 2 pieces of cotton or cotton-blend batting 18x18 inches; 3 or 4 spools of cotton or polyester thread - two spools should provide high contrast to each other and to your top fabric; one spool to match the backing fabric (use a good thread such as Mettler or Superior); Lined paper to take notes, UN-lined paper for doodling and scribbling, pen and pencil for notes and for doodling; a sense of humor!

Contact Sarah (sarah@sarahannsmith.com) for a fuller, annotated list.

#604 SILHOUETTE ON BATIKS (M) \$55 (NQA member); \$65

Linda Carlson Full day Intermediate

Create the background first! Machine piece a simple 40-inch square batik background with borders that will provide a beautiful, graphic canvas for an elegant appliqué in the foreground. Easy rotary cutting, machine-piecing techniques and needleturn hand appliqué are taught. Choose one of two circular Scherenschnitte silhouettes to create in class on the straight set only.

Supplies: Rotary cutter with new blade and medium size mat; (1) 18 inch sq. freezer paper, thread color to match appliqué silhouette; a neutral color thread for piecing top background; paper and fabric scissors; a no-smudge fabric marker or purchase available in class; appliqué needle or purchase available in class. *Fabrics for top* - (1) generous 1/2 yd. each of (3) batik prints of same color and value, i.e. 3 medium reds, 3 light blues or 3 medium dark greens, etc. Prior to class, pre-cut 3 strips of each print 5-1/2 inches wide x 24 inches long on cross grain. (Remnants to be used for corners and binding.); (1) 27 inch square either very dark OR very bright batik print for silhouette; (1) 1 yd. batik print for borders. Pre-cut (4) 5-1/2 inches wide x 30-1/2 inches long; (1) 3/4 yd. batik print for serpentine vine and leaves.

#605 FREE MOTION QUILTING PATTERNS (YM) \$55 (NQA member); \$65

Carol Taylor Full day Confident Beginner

If you have not had a chance to take Carol's free motion stitching class, do try to sign up as it continues to fill each time it is offered. Everyone wants to be able to machine quilt and get things done more quickly! Carol will teach 16 quilting design patterns for you to try and go over many of the techniques in the various books teaching free motion quilting. This is a hands-on class to learn and practice these fast new ways of quilting and embellishing your quilts by machine. We will spend time discussing which threads to use where and learn to do decorative stitching with those metallic and rayon threads! Machines need only have a straight stitch to do these designs. Even students who've had very little quilting experience have been successful using these methods. You'll be able to give your quilts a unique flavor, style, and sparkle in no time using these methods!

Supplies: Contact Carol (ctquilts@rochester.rr.com) for a complete list with check off boxes and photos. This will make gathering your supplies easier.

Classes continued

#606 EASY PIECES: CREATIVE COLOR PLAY WITH TWO SIMPLE QUILT BLOCKS (M)

\$55 (NQA); \$65

Margaret Miller

Full Day

Confident Beginner

A sewing workshop which yields a quilt top plus working plans for many more; based on Margaret's book. Work with two different versions of a rotary cut and quickly sewn block, creating blocks and mirror images of the blocks at the same time. Each block contains six values (light to dark), and is composed of only two shapes (triangles and wedges) which are easy to cut (no templates). Combinations and rotations of the blocks on the design wall yield hundreds of quilt possibilities.

Supplies: One copy of *Easy Pieces: Creative Color Play with Two Simple Quilt Blocks*; Sewing machine – in clean and oiled condition, with several bobbins already filled; Extra machine needles, bobbins, and toolbox that came with machine; Machine cords, FOOT PEDAL, etc.; Extension cords and multi-plug power strip if you have one; Thread appropriate for machine (color doesn't matter); Scissors for fabric, thread snippers, and seam ripper; Pressing equipment: iron and small ironing board or pad; Rotary cutter with sharp blade (extra blades recommended); Acrylic straightedge – 6" x 24"; Rotary cutting mat – large enough to cut fabric 22" wide; Six-inch acrylic square. *Designing Supplies:* 1-½ yds. cotton quilt batting or flannel/backed tablecloth for vertical design wall; WIDE masking tape to adhere design surface to wall; *Fabrics* – Bring 8-10 values (dark through medium through light) in EACH of TWO color families. Bring about ½ yd. of each fabric. NOTE: You need not buy all this fabric new: pull from your fabric collection first, and fill in value gaps with new fabric! You may bring two similar fabrics and use them as ONE of your 8-10 values in a given color family. The greater number of fabrics you bring, the more flexibility you will have in the workshop. *Optional but recommended:* Reducing glass (or other reducing device such as binoculars or camera); Cushion or pillow for your chair, to raise you to a good sewing height!!; Camera with flash capability, plenty of film for prints, extra batteries.

#607 STAINED GLASS IRIS (YM)

\$55 (NQA member); \$65

Fran Kordek

Full day

All levels

Think spring and make this Iris panel (14" x 28") using fabric fusing and purchased bias tape. A full size pattern and a double needle machine technique that applies bias and quilts in one step all simplify the project.

Pattern fee \$6.

Supplies: Sewing machine in good working order; 4 mm double needle (zigzag machines that thread from front to back will accommodate double needles); extra bobbins; scissors for paper and fabric; Pencils; Marker appropriate for background fabric; Pins; Seam ripper; Iron and ironing surface; Black thread; Walking foot (optional); *Fabrics:* ¼" double fold black bias tape - two 4 yd packages (fusible bias is not recommended); Low loft batting (Warm and Natural or similar type) two pieces needed for the wall hanging: one 9" x 22" for stained glass panel, one 16" x 30" for wall hanging; (¾ yd of 45" batting is sufficient for one small wall hanging); Wonder Under or similar light weight paper backed fusible – ¼ yd; Backing - two pieces needed for each wall hanging: one 9" x 22" for stained glass area (not visible in finished item; may be muslin), one 16" x 30" for wall hanging (½ yd); Borders - 3/8 yd; Background - ¼ yd; Binding - ¼ yd; Leaves - 1/8 yd; Stems - 1/8 yd (Check both sides of fabric; one fabric may serve for leaves and stems; 1/8 yd of such fabric is enough); Main Iris color - 4" x 10" or 1/8 yd; Accent Iris color - 4" x 6" or 1/8 yd.

Several light boxes will be provided for class use. Double needles will be available for purchase.

#608 HATTIE'S SCRAPPY HOURGLASS QUILT (YM)

\$55 (NQA); \$65

Jo Morton

Full day

Beginner

Effective scrap quilts can be a problem. Let Jo help you tackle your fabric choices to make this scrappy quilt reminiscent of a late 19th century piece. We will pair up fabrics to make this wonderful vintage re-creation scrap quilt. Neat piecing technique and pressing tips will make assembling this quilt a breeze. Really!

Supplies: Sewing Machine in good working order with a 1/4" foot; Basic sewing supplies - suggestions: scissors, pins, seam ripper, extra needle for machine, wound bobbins, Ott light for extra light (optional); Thread for piecing - 100% fine cotton thread, like Aurifil or Presencia in a neutral shade such as tan, taupe or light brown; Rotary cutter (with good blade) and small rulers up to 12" suggested, 6" or 6-½" square and a 4" or 4-½" square with 1/8" grid recommended - we will be cutting small pieces and 24" rulers are overkill and take too much room; Small cutting mat - 12" x 18" (or several large cutting mats to be shared). For piecing blocks and inner border of flying geese

-- bring pieces at least 8" square or larger - a total of 36 lights AND 36 darks; You could bring more in case. Lights suggestions - shirtings and olde looking stripes and checks in different light values; Darks suggestions - black, brown, gray, eggplant, indigo or navy, and khaki brown - also include stripes and interesting olde looking or reproduction fabric. Sashing - ¾ yd. red print. Border - 1 yd. black print. Cornerstones - fat quarter of red/black print. Binding - ¼ yd. for single thickness binding, ½ yd for double fold binding.

#609 WINDING PATHS (YM)

\$55 (NQA member); \$65

Donna Lynn Thomas

Full day

Confident Beginner

This simple split Nine Patch block goes together to form many complex designs. Learn to make this block and see all the design options available for a multitude of interesting sets. Always a wow!

Supplies: You do not need to pick all your fabrics for the entire quilt. Study the block and its value relationships before choosing your fabrics. Bring a fat quarter each of the two main prints, the two accent prints and the dark and light prints to class. Sewing machine and thread; Rotary cutting mat, good quality ruler (at least 6" x 12"), and sharp rotary cutter; Bias Square™ ruler (any size is fine); Basic sewing supplies. Please e-mail Donna at dttonna@cox.net for fully annotated supply list.

#610 PHOTO ALBUM QUILTS- GARDEN TREASURE (YM)

\$55 (NQA member); \$65

Wendy Butler Berns

Full day

Confident Beginner

Learn the process of creating simple figurative and pictorial quilts from a photograph. You will use Wendy's original design pattern "Garden Treasure" and cover her how-to picture image appliqué steps that include freezer paper, glue stick and invisible machine appliqué. You will gain the confidence and the know how to use one of your own cherished photos in an original piece.

Pattern fee \$10.

Supplies: Please see www.wendybutlerberns.com/wshopA6-PhotoAlbum.html

#611 MAGICAL MEDALLIONS - BLOCK 1 (H)

\$55 (NQA member); \$65

Karen Kay Buckley

Full day

Intermediate

I have been fascinated with medallion style quilts for a long time. The balance and symmetry of medallion designs has always enticed me. Within each block there are many exciting twists and turns. You will learn to sew smooth curves, sharp points and perfect circles. Come have a fun time while you appliqué the day away.

Pattern fee \$8. Pattern will be sent to you; please trace onto your background before class.

Supplies: Pencil; water soluble glue stick, scissors-fabric and paper, tape, emery board, freezer paper, fabric markers, silk or other fine appliqué pins, stapler and staple remover, sandpaper or sandpaper board (opt.), iron; *Fabric:* background-bring one 20" square, overlay-bring one 20" square, underlay-bring ½ yd., green-bring four ¼ yd. pieces, purple-bring 1/8 yd. of three different purple fabrics, pink-bring 1/8 yd. of two pink fabrics, yellow or gold-¼ yd. piece.

BSS (Basic Sewing Supplies) includes: scissors (fabric and utility), thin straight pins, needles, seam ripper, thread, thimble, pencil, eraser, sharpener, fabric markers, notebook, and ruler.

Kit-pattern-template fees are paid to instructor in class. Exact change is appreciated.



Continued on next page

Classes continued

#612 AUNT MILLIE'S GARDEN – APPLIQUÉ (H) \$55 (NQA); \$65

Becky Goldsmith **Full day** **All levels**
Lovely blocks from an old-fashioned garden are yours, fresh for the picking!

Please see www.pieceocake.com/ClassInfo/beckyclasses-02.html and scroll down to Aunt Millie's Garden quilt. Block 8 will be the class project.

Supplies: *Fabric: Pre-wash all fabric before class. It appliques better! Background Fabric: Cut 1 square 16" x 16" Appliqué Fabric: Bring scraps of fabric that are at least 6" x 6" square that would be suitable for a stem, leaf, and flower. Bring more fabric if you would like to have more color choices. Small, sharp, paper scissors; Small, sharp, fabric scissors; An ultra fine point Sharpie marker; One 14" x 14" square of clear upholstery vinyl in a medium weight. Keep the tissue paper that comes with the vinyl; One sheet of clear, heavy weight, self-adhesive laminate – available at most office supply stores or on our website (pieceocake.com). Get the single-sided sheets, not the 2-sided pouches. Avoid repositionable laminate; I will supply you with 2 needles and some 1/2" sequin pins. You will need additional pins. I prefer 1/2" sequin pins for pinning appliqué; I will have some Superior Masterpiece 100% cotton thread for you to sew with in class. If you would like to bring thread from home to use in class, I recommend these 100% cotton threads: Superior Masterpiece, Aurifil 50 weight, Mettler 60 wt., DMC 50 wt. machine embroidery thread, or YLI Soft Touch cotton. All are fine, strong, 2-ply threads; White Chalk Pencil (I like the General's charcoal pencil in white); A General's Sketch & Wash pencil OR a Quilter's Ultimate Mechanical Pencil; A sandpaper board or bring a sheet of fine grain sandpaper if you don't have a board; Baggies for your templates; **Optional** - A light and an extension cord in case the room is dark. **Optional** - Many people find that appliqué is easier if they have a pillow in their lap to rest their forearms on. It's a good idea to bring a pillow to class for this purpose.*

#613 WATER LILIES (H) \$55 (NQA member); \$65

Linda M. Poole **Full day** **All levels**

Who can resist appliquéing the serenity of these gentle flowers? Linda teaches you her signature appliqué technique of glue stick freezer paper appliqué to make these simple flower units in your hand before appliquéing them to the background. This enchanting water lily pond is so fun and easy. That's a promise from Linda!

Kit fee \$15 *Includes pattern, UHU water soluble glue stick, special toothpicks, pre-drawn freezer paper templates, instructions, color photo, bias tape, appliqué needles.*

Supplies: *Pre-wash all cotton fabrics - fat eighths, 3 shades of one color for 3 lilies; fat quarter green; (1) 15" x 34" piece color of water; (1) 9" x 34" piece color of sky; 9" x 12" cardboard for gluing surface; thread to match fabrics; water soluble blue fabric marker; scissors – paper and fabric; lunch baggie with pre-moistened washcloth inside.*

#621 LONGARM FEATHER CLASS FOR BEGINNERS (M) \$75

Linda Taylor **Morning** **Beginner**

Each student in this exciting class will learn how to quilt several different types of freehand feathers. The project is a small "dream-catcher" wall hanging consisting of unique fancy feathers and ferns. Feathers are fundamental to the longarm quilter. Linda believes watching is one thing, quilting it yourself is another.

Kit fee \$20. *(See description in #501)*

All Gammill longarm classes are hands-on; 2 students per head max.

#622 CELTIC INTERLACES (H) \$35 (NQA member); \$45

Linda J. Hahn **Morning** **All levels**

Everyone is Irish in this class! You'll be adding Celtic knotwork to your quilting projects in no time with this unique construction method that requires NO MARKING. Although the class will be using Clover Quick Bias, Linda will demonstrate several methods for making your own fusible bias tape. Linda will also demonstrate how to hand appliqué and machine appliqué the knots to any background. Use this method for many projects!

Kit fee \$25. *Includes pattern (4 knots), one 11 yard roll of Clover Quick Bias (select color in class) and a Teflon pressing sheet. (Retail \$31.00)*

Supplies: *(4) 8-1/2" squares of a background fabric (solid or read solid - batiks are fine); Small travel iron and extension cord; Individual pressing surface; Small pair of scissors; A few straight pins.*

#623 ONE STENCIL, MANY DESIGNS (D) \$35 (NQA member); \$45

Holice Turnbow **Morning** **All levels**

Is it a border or a block motif? Learn the many ways a single stencil can be used to create the many parts of a mini whole cloth design. While we may see the whole, a quilting design is often made up of one or several smaller design units. Using the single motif, students will develop the full design on paper and then transfer it to fabric. The possibilities are almost limitless and controlled only by your imagination.

Kit fee \$7. *Includes most items needed for class.*

Supplies: *pencil, eraser, ruler or straight edge.*

#624 PIECED APPLIQUÉ (H) \$35 (NQA member); \$45

Sandy Turner **Morning** **All levels**

Needle turn appliqué is the basis of this class - with a twist. Instead of applying the fabric to the background first, you will learn how to join the fabrics together in your hand before they are applied to the background. Why is this important? Because it allows you to choose your background fabric last instead of first - which means you can use colors rather than the usual neutrals of black, beige, or white. Color on color is always the most exciting visually.

Kit fee \$10. *Includes pattern, fabrics, reproduction film, and thread.*

Supplies: *Your favorite size appliqué needle (I use size 11 milliners); Small embroidery scissors; White marking pen (fine) by Clover.*

#631 BORDERS AND CORNERS AND BLOCKS, OH MY! \$75

Linda Taylor **Afternoon** **All levels**

A well-rounded longarm quilter knows as much about the technical skills as he/she knows about freehand quilting. Don't limit your abilities by neglecting these skills. By necessity, Linda is an efficiency expert on how to work a custom quilt. She will show you how to quilt the border design without marking the quilt and how to set block and triangle designs in the quilt. Be sure of your skills to maintain the integrity of the piecing, whether you use patterns or do mostly freehand quilting.

Kit fee: \$20. *(See description in #501)*

All Gammill longarm classes are hands-on; 2 students per head max.

#632 MARGARITA MADNESS (D) \$35 (NQA member); \$45

Linda J. Hahn **Afternoon** **All levels**

"Quilt as Desired" can be the three most dreaded words for quilters, but not any longer. After this class, you'll look forward to finishing your top so you can begin quilting. After a brief lecture covering various threads, battings, and gadgets available to ease your machine quilting, you will draw along with Linda as she shows continuous point to point quilting using simple shapes you already know - the "e", "c", "v" and "l". Work on block designs, background fillers, border and sashing designs. Learn how to draw simple feathers, vines and combine background fillers. A machine quilting class without machines! We're sorry - margaritas will not be served during class.

Kit fee \$5. *Includes 10+ pages of notes and workbook pages, page protector and dry erase marker.*

Supplies: *pencil, note-taking materials.*

#633 DESIGNING THE QUILTING MOTIF (D) \$35 (NQA member); \$45

Holice Turnbow **Afternoon** **All levels**

The quilting design is often the great mystery of quilt making. This class will explore the factors which make up good design and the size appropriate to the various areas to be quilted. Styles of pre cut stencils or printed designs will be discussed. The first part of the class will be devoted to size, shape and style. The second part will be spent (1) working on a series of pencil and paper exercises to gain confidence in designing one's special motif, (2) learning how to take sections from

Classes continued

existing designs for fillers or new arrangements, and (3) practicing making templates or stencils from designs in books or other sources.

Kit fee \$7. Includes most items needed for class.

Supplies: pencil, eraser, ruler or straight edge.

#634 DECORATIVE BEADING TECHNIQUES (H) \$35 (NQA); \$45
Mary Stori Afternoon **All levels**

Create a reference sampler as you learn eye-catching decorative techniques such as the basic bead stitch, bead appliqué, picot stitch, chain stitch, branched fringe, netting, bugle bead walls, bead embroidery, and more. Be prepared to become addicted to the special effects, the fun, and mobility of beading. This class features live video projection, every student has a front row seat! No experience necessary!!

Kit fee \$6. Includes the beads, embellishment items and beading thread.

Supplies: An 8" or 10" wooden embroidery hoop, fitted with muslin. An inexpensive hoop will do if you want to keep sampler in the hoop permanently as a reference. Or, substitute an 11" PVC quilting frame if you already own one....do not purchase it especially for class; sewing needle - the smallest quilting between you can thread, sizes 10, 11, & 12 generally work well; appliqué needle - suggest size 10 or 11 (also known as a "sharp"); small ruler - 6" long x 1" wide is adequate; lead pencil; small shallow dish for beads - avoid plastic if possible; small sharp scissors or thread clips; Ott light and extension cord (opt.).

Friday, June 18

#600 2-DAY INTRO TO QUILT JUDGING (continues)

See description in #600.

#701 MY STARS (M) \$55 (NQA member); \$65
Sally Collins Full day **Confident Beginner**

This project combines 3" and 1-1/2" sawtooth stars with accuracy being the focus as students create double half-square triangle units to create the block(s). Students can choose either one or both sizes, depending on their skill level. Class time will be spent between lecture, explanation, demonstration and student sewing time. A handout for the project is included.

Supplies: Rotary cutter, mat, and ruler (I use a 3" x 18" and a 4" sq. Omnigridd rulers that have a 1/8" continuous fine black line grid on them. Be sure to put something on the back that prevents slipping.); fabric scissors; long, fine pins (.4mm); fabric marker(s) you can see on your fabrics; notebook/pencil; 10" sq. fleece (to lay out pieces); seam ripper; basic sewing supplies; Fabric - Please use good quality 100% cotton. 6-1/2" sq. of several (7-10) different fabrics for the stars (Vary scale and contrast all fabrics with background); 1/4 yd. background; *1/4 yd. that compliments star fabrics with visual texture for side triangles and corners; *1/4 yd. border (I used a large floral that compliments my stars.) *Not needed for class but you can bring them. Note: If you are coming to class for the precision sewing instruction rather than the actual project, just bring a few fabrics that highly contrast with each other. Solids work well.

#702 DECORATIVE STITCH APPLIQUÉ (M) \$55 (NQA); \$65
Sarah Ann Smith Full day **All levels**

Make a small wallhanging or a selection of small blocks which take full advantage of all those decorative stitches on the sewing machine. Using fusible appliqué and an assortment of as many threads as you care to bring and use, you'll see how versatile a single leaf pattern can be! The stitches you use in this class can be adapted to your choice of other appliqué methods. The project samples can be used for a quilt, a garment or home dec items.

Supplies: Glasses or reading glasses, if you use them! Ruler - at least 12" long, 3" wide; Sewing machine needles; Scissors, thread snips, seam ripper; 18mm rotary cutter and mat (optional); Misty Fuse fusible web and parchment paper or press sheet (available from Sarah in class for a modest fee). For a 16-leaf sampler, a 21" square of solid-looking fabric or for individual blocks, 10-16 7" squares in a solid-ish fabric; For leaves, 3x6" of fabric for every two leaves--so if you want to make 16 leaves, you'll need 12" x 15" or so. Contrasting fabric (about 8x8 inches) for stems. A selection of matching and contrasting threads--bring more than you think you'll

need! Freezer paper for templates and as a stabilizer. Lined paper to take notes, UN-lined paper for doodling and scribbling, pen and pencil for notes and for doodling; a sense of humor!

Contact Sarah (sarah@sarahannsmith.com) for a complete, annotated list.

#703 THOROUGHLY MODERN GENIUS (M) \$55 (NQA member); \$65
Linda Carlson Full day **Experienced Beginner**

Let my new sizzling 29-piece fabric collection bring out your hidden contemporary art skills with dazzlingly bright colors and bold graphics. The quilt has optional areas for machine quilting, embroidery, plus hand or machine appliqué. Enjoy the easy machine piecing techniques.

Kit fee \$75. Includes the pattern, 13 yds. mostly pre-cut fabric for top, backing, and binding. Only 17 kits are available, so if students want one, contact Linda at ljcarlson@hughes.net or (573)581-8643 to reserve it.

Pattern fee \$10 IF you wish to use your own fabrics. Contact Linda so she can send the yardages to pre-cut for class.

Supplies: Basic sewing supplies.

#704 ARC-I-TEXTURE WALLHANGING (YM) \$55 (NQA member); \$65
Carol Taylor Full day **Confident Beginner**

Create a small (15 x 15) unique quilt of your very own and learn something about composition, textures, and circular quilting. This is a chance to use some of those fancy and unusual fabrics that you've been attracted to, but didn't know how to use. Tame them by fusing, and learn to mix them with other textured-looking fabrics. Learn a bit about composition and how to balance it with both color and size. Learn about fusing and how to finish your quilts with facings as opposed to bindings. And Carol will also teach you how to quilt and couch those "perfect" circles that have almost become a trademark on her quilts. You'll be thrilled with the resulting small quilt!

Supplies: Contact Carol (ctquilts@rochester.rr.com) for a complete list with check off boxes and photos. This will make gathering your supplies easier.

#705 EXPANDED FREEHAND TECHNIQUES (M) \$150
Linda Taylor Full day **Intermediate**

Getting bored with your meandering techniques? Then this is the class for you. Linda shows you how to catch the rhythm of quilting a lone star with only one start and stop; many more stippling and meandering patterns (including Linda's brand new fill-ins); a peacock fern medallion; additional freehand sashing ideas; and sensational new ideas from some of Linda's latest show quilts. You'll be proud to go home with proof of new ideas and what you can do!

Kit fee \$25. Includes quilt prepared, stabilized and ready to quilt, thread, large drawing pad and pen, handout for class project, small scissors for cutting threads and book to go along with the class.

All Gammill longarm classes are hands-on; 2 students per head max.

#706 BIRDS IN THE AIR (M) \$55 (NQA member); \$65
Sandy Turner Full day **All levels**

Have you bought some fabric that you just don't know what to do with? I have spent the last ten years answering the question - I love the fabric, but what do I do with it? Use the traditional Birds in the Air block in combination with the pictorial fabric of your choice and venture into the world of design! With the use of this quilt block and pictorial fabric, you will be able to change a straight set square into an on-point square.

Supplies: 1-1/2 yards of your choice of pictorial fabric (lions, tigers, floral, Japanese style, etc); 1 yd. of accent fabric - choose a fabric that either matches the background of your pictorial or is least important in your pictorial (dark rather than light) **Note:** Figures in the pictorial should measure a minimum of 3" - larger is better than smaller); sewing machine, rotary cutter, mat, and ruler, 12-1/2" square ruler; White chalk marker; batting or flannel for design wall (40" x 60"); Painter's tape and straight pins; paper cutting scissors; thread to blend with your chosen fabrics; general sewing supplies.

Classes continued

#707 WINDING WAY or WHEELS OF MYSTERY (YM) \$55 (NQA); \$65 Fran Kordek Full day Intermediate

Learn techniques to handle gently curved pieced seams. Class project will focus on the traditional 2-fabric layout (choice of table runner or small wall hanging). Plenty of exciting design possibilities will be presented. Good piecing skills are required.

Template fee \$18.

Supplies: 1 yd. light fabric, 1 yd. dark fabric; Machine in good working order; Machine foot with an edge flange (piecing foot with flange, edging foot, edge stitching foot, or Curve Master foot; if unavailable, methods to mark the machine will be demonstrated); Stiletto; Rotary cutter (45 or 28mm) and mat; Thread for project.

#708 NEW YORK BEAUTY (YM) \$55 (NQA member); \$65 Linda J. Hahn Full day All levels

An "out of the box" construction method makes creating this block a piece of cake! Learn a super simple and quick technique for paper piecing the arcs and then (here's the WOW) you'll learn how to set in the pie and background shapes that will guarantee a perfect block on your first attempt! Handouts contain several layout options for you to choose from (or you can design your own). Learn a unique way to audition quilting designs for this project.

Supplies: Basic quilting supplies; 8-1/2" or 9-1/2" ruler with a bias line (I use Omnigridd 9-1/2"); Cheap page protector; Dry erase marker; Pencil; Template plastic (to reinforce pattern pieces) and glue stick. Note: If you order the kit, you do not need the template plastic and glue stick. **Fabric:** The following is for ONE block - please bring enough for 6-9 blocks. 8" square (for background and pie shapes to mix and match); (6) 3" x 4" rectangles for background spires; (5) 2-1/2" x 3-1/2" rectangles for spires (points) **Optional:** Students may pre-order a kit which contains custom-made acrylic templates, paper piecing pattern and EQ paper for \$15.00 (includes shipping). The EQ paper does not require removal. Please pre-order directly from instructor no later than May 17 to allow printing your paper foundations before class. Instructor will have regular paper foundations available in class (which will need to be removed). To order, e-mail instructor at lawnquilt@aol.com

#709 DOODLE IN REVERSE (H) \$55 (NQA member); \$65 Teri Henderson Tope Full day All levels

Create this beautiful wall hanging and learn this unique dimensional look and classic technique! With Teri's method, the intricate hand appliqué design is made fast and easy. The secret is to use large pieces of background fabric underneath the appliqué design for easier handling. Tiny seam allowances are a thing of the past! Beginners who love the look of appliqué can easily master this useful technique.

Supplies: Light box, Appliqué scissors; #10 appliqué needles; Thread to match background fabric (DMC 50 weight cotton); Thread to baste; 3/4" glass head pins; Small iron and pressing mat (opt.); Fabric marker (I use archival quality gel pens that match appliqué fabric, please test to insure visibility on your background fabric before class); **Fabrics** - Washed and pressed - 1 yd background (brown batik shown in sample) cut into a 30"x30" square; 1/2 yd binding and appliqué (lime green in sample); Assorted fat quarters for appliqué (have fun with these) - purple, orange, yellow, white, greens.

#710 HAND PIECED LEMOYNE STARS (H) \$55 (NQA member); \$65 Jo Morton Full day Beginner

Stitch a piece of history using this early LeMoyné Star block, dating to the early 1800's. Delight in the time-honored tradition of handwork which includes making accurate templates and 'no knot' hand piecing. Pressing tips are given. Machine sewing directions given for the Sawtooth borders and setting. These techniques are perfect for take-along projects.

Supplies: Basic sewing supplies; Scissors, pins and thimble, needle threader; Ott light (opt.); Mechanical lead pencil (I like a .9 mm - it is fatter but it glides over the fabric weave nicely), Clover Fine White marking pen, item #517 for dark fabrics; Rotary cutter, small ruler (4" x 4" or 6" x 6" is nice), a small mat 12" x 18" is good; Thread - neutral color like tan or taupe, suggest Presencia or Aurifil 50 wt.; Opt - Thread Heaven, silicone thread conditioner. **Fabrics:** (I prefer to use pre-washed

fabrics for handwork). 3 different blues for star piecing - (4) 2" x 12" lengthwise strips; 5 different browns or tan for star piecing - (6) 2" x 12" lengthwise strips; 2 different backgrounds (Toast fabric line used) - one FQ of stripe, one Fat eighth of 2nd choice; Sweet sixteen of blue print for alternate block; blue/brown wavy stripe for HST borders - FQ Blue print for alternate block - sweet sixteen FQ for Single Fold Binding - probably the same blue/brown wavy stripe; Backing - 5/8 yd from 'Toast' used; Batting - 100% cotton - Mountain Mist Blue Ribbon recommended for vintage appeal for either hand or machine quilting (can be obtained later). Or substitute colors to your liking.

#711 OUT OF THE BLOCKS QUILT DESIGN (D) \$55 (NQA); \$65 Wendy Butler Berns Full day All levels

Exploring the many elements of design requires the opportunity to play in an encouraging and relaxed environment without committing to yet another unfinished quilt project. This workshop covers the basic aspects of design through discussion, viewing photos and slides, and hands-on exercises. With no sewing and using 'mini measurements', students can create one or more small original block designs.

Supplies: **Required** - Pencil and notepad for notes; Fine tip permanent pen; Several sharpened pencils; Some newsprint or typing paper for doodling initial designs; Clear rotary ruler at least 3" x 12"; Basic box of colored pencils; Scotch tape; Tracing paper; Graph paper; 2-3 glue sticks; Soap slivers or chalk pencil for marking on dark fabric; Plastic template material, tag board, poster board, or empty cereal box for creating templates; Several small zip lock bags for storing items; Paper scissors; Fabric scissors; 1/2 yd muslin or other foundation fabric; 1/2 yd (approx. 18" x 36") of black felt and/or Warm and Natural batting; A variety of fabric scraps for use in gluing original block project--remember value rule: lights, mediums, darks plus-- various scale prints (small, medium, large), plaids, stripes, theme fabric, favorite fabrics, batiks, hand dyed; Bring fabric in these approximate quantities: fat eighths, fat quarters, large scraps or strips of fabric approximately 3" wide (at least 3 to 4 fabrics of each value) I. lights 2. medium lights 3. mediums 4. medium darks 5. Darks ***students can also share and trade fabric scraps and strips if they wish. **Optional** - Graphite pencils of various hardness used for shading in designs; 1/2-1 yard of fusible web and iron; small cutting board/rotary cutter; small design wall (approx. 2 feet x 2 feet) foam core covered with flannel or felt.

#712 DUTCH TULIP WREATH - APPLIQUE (H) \$55 (NQA); \$65 Becky Goldsmith Full day All levels

You will love learning the fine art of hand appliqué in this class for all quilters.

Please see www.pieceoecake.com/ClassInfo/beckyclasses-02.html and scroll down to Dutch Tulip Wreath under How Do You Do That.

Supplies: **Book** - (I recommend this book but it is not required for class.) *The New Appliqué Sampler* by Piece O' Cake Designs. **Fabric** - Pre-wash all fabric before class. It appliques better! Background - 1 square 12" x 12" to be used as background; Appliqué - Bring scraps of fabric that are at least 6" x 6" square for one stem, one leaf, a tulip, and a circle. Bring more fabric if you would like to have more color choices. **Supplies** - Small, sharp, paper scissors; Small, sharp, fabric scissors; An ultra fine point Sharpie marker; (1) 10" x 10" square of clear upholstery vinyl in a medium weight. Keep the tissue paper that comes with the vinyl; (1) sheet of clear, heavy weight, self-adhesive laminate - available at most office supply stores or on our website (pieceoecake.com). Get the single-sided sheets, not the 2-sided pouches-avoid repositionable laminate; I will supply you with 2 needles and some 1/2" sequin pins. You will need more pins. I prefer 1/2" sequin pins for pinning appliqué; I will have some Superior Masterpiece 100% cotton thread for you to sew with in class. If you would like to bring thread from home to use in class, I recommend these 100% cotton threads: Superior Masterpiece, Aurifil 50 weight, Mettler 60 wt., DMC 50 wt machine embroidery thread, or YLI Soft Touch cotton. All are fine, strong, 2-ply threads; White Chalk Pencil (I like the General's charcoal pencil in white); A General's Sketch & Wash pencil OR a Quilter's Ultimate Mechanical Pencil; A sandpaper board or a sheet of fine grain sandpaper if you don't have a board; Baggies for your templates; (Opt.) - A light and an extension cord. (Opt.) - Many people find that appliqué is easier if they have a pillow in their lap to rest their forearms on. It's a good idea to bring a pillow to class for this purpose.

#713 SMASHING SETTINGS FOR SAMPLER BLOCKS (D) \$55 (NQA); \$65 Margaret Miller Full day Advanced Beginner

Make way for the Sampler Quilts of the 21st Century!! No more "3 blocks by 4 rows" with three strips of fabric "holding them in!!" With design approaches simple enough for advanced beginners, you can make

Classes continued

quilts look complex using strip piecing, refreshing seam angles, and variegated fabrics. With my non-threatening template system and a few color guidelines, you'll never think about sampler quilts in quite the same way again!

Supplies: Copy of book *Smashing Sets: Exciting Ways to Arrange Quilt Blocks* (available from your local quilt shop or from the author); Pencils, sharpener, eraser; flat rulers (one long, one short are handy) **not** Plexiglas straightedges, because they cast a shadow on the paper; Graph Paper – 8 squares per inch preferable, cross section pad. If you can't find 8 squares/inch, bring whatever graph paper you have; Tracing paper – pad or roll; Glue stick, scotch tape; Scissors for paper and rotary cutter with blade too dull to cut fabric; Rotary cutting mat; Plexiglas straightedge – 3" x 18"; 1-½ yds fuzzy surface fabric (cotton quilt batting or flannel-backed tablecloth are best) to display blocks on the wall; WIDE masking tape to adhere design surface to wall; Optional but recommended - Desk lamp; Cushion or pillow for your chair to raise you to a good working height; If you have a set of quilt blocks at home you've never set together, bring them. Having quilt blocks to see out of the corner of your eye sometimes makes the design exercises more tangible. If you don't have a set of blocks, perhaps a quilting friend does. It doesn't matter if the blocks are not all the same size, or the same design, or even the same color strategy!

#714 BEADING BASICS AND BEYOND (H) \$55 (NQA member); \$65 Mary Stori Full day All levels

This workshop introduces effective beading techniques with practical applications for quilts and garments. Mary offers an in-depth discussion about beads - care, storage, equipment needs, and stabilizing methods. In the morning, create a reference sampler as you learn basic bead stitch, straight and curve line beading, scatter stitching, and the lazy stitch. Also learn to attach beads, charms, buttons, trinkets, and unusual objects. The afternoon focuses on creative edging techniques to decorate quilt bindings, borders, blocks, or outline appliqué motifs with beads!! These bead accents will provide a gently framed or highly dramatic effect to quilts of all construction styles. This class features live video projection!

Kit fee \$10. Contains the beads, embellishment items and beading thread.

Supplies: An 8" or 10" wooden embroidery hoop and muslin to fit hoop. An inexpensive hoop will do if you want to keep your sampler in the hoop permanently as a reference or substitute an 11" PVC quilting frame if you already own one;. Make and bring a 14" x 6" rectangular mock "quilt" using a solid light-colored fabric (like muslin) for the body of the quilt and the binding. Please bind using the double fold method, with mitered corners. Hand sew the binding to the backing using a blind or appliqué stitch (rather than machine stitching) to make the beading easier to accomplish. The binding on the top should measure no less than 3/8" wide - measured from seam line to folded edge. You don't need to make an actual quilt - a "hot pad" type will do. Minimal machine quilting to hold the layers together is sufficient. A solid, light-colored fabric (like muslin) for both the body of quilt and binding will be easier to work with during this learning process. **This item can be purchased in class for \$6.00 if you'd rather not make one;** needles - a size 10 or 11 quilting between (or the smallest size YOU can thread) and a size 10 or 11 appliqué needle (also known as Sharps or Straw Needles); small ruler - 6" long x 1" wide is adequate; 3 straight pins; small shallow dish for beads - avoid plastic if possible; small scissors that are sharp to the point or thread clips; pencil or fine-line permanent pen to write notes on your samplers; Ott light and extension cord (opt.).

#715 FLORAL DELIGHT (H) \$55 (NQA member); \$65 Linda M. Poole Full day All levels

Learn how to "easily" break down appliqué pieces to create this delightful vase of floral delights. Everything is appliquéd in your hands before sewing them to the background. The nice thing about this technique is that you can take it anywhere to work on.

Kit fee \$15. Includes freezer paper patterns with pre-drawn designs; step by step photo instructions; appliqué needle; water soluble glue stick; photograph of Floral Delight; project bag; specialty toothpicks; bias tape for your stems.

Supplies: BSS; small trash bag; Fabric – pre-wash all: (16) 4.5" squares (Asst. VERY light blue or your choice for background); Flowers – 4 Asst. fat 1/8s or large scraps; Leaves: 2 Fat 1/8's of green; Vase – (3) 8" x 8" squares; thread to match your fabric; moist washcloth inside of plastic baggie.

#721 THREAD PAINTING SIMPLE FLOWERS (M) \$35 (NQA); \$45 Nancy Prince Morning All levels

In this fun and easy workshop you'll have fun playing with thread and discover how easy it is to blend thread. You will discover how to coax a straight or zigzag stitch to do the work for you. This is a great project for those that haven't tried thread painting before. Simple, quick and easy to master!

Kit fee \$2.50 for preprinted designs and stabilizer.

Supplies: Thread Painting Thread – 40 weight rayon or polyester; Petals – Medium dark, medium and light pink (all in the same color family), light yellow, off white, medium gray; Petal center – Medium green, bright gold, light yellow; Stems and leaves – Dark olive, medium olive, dark cranberry; Clear invisible thread (available for purchase in workshop); Bring additional rayon or polyester threads in greens, pink, yellow, white and gold in your stash; 6" wooden or plastic machine embroidery hoop (available for purchase in workshop); Basic sewing supplies – scissors, 80/12 machine needles, tweezers, etc.; Black permanent ultra fine point marker.

Please see fully annotated supply list at www.nancyprince.com.



NEW BEE CLASS

#722 HAND PIECING: THE LOST ART (H) \$35 (NQA member); \$45 Donna Lynn Thomas Morning Beginner

We have jettisoned an entire library of beautiful old blocks if we depend entirely on rotary cutting to produce them. Many of those old blocks simply cannot be rotary cut and so we ignore them. What a shame! In this class, students will learn how to use finished size templates to cut oddly shaped block pieces and hand piece them. Donna will help you regain the portability of piecework and the pleasure in the process of hand piecing that our foremothers enjoyed. No longer tied exclusively to the sewing room or sewing machine, students will learn a lot of lost skills.

Kit fee \$10. Includes all fabric and supplies except for fabric shears and silk pins, which the student must supply.

#723 FREE-FEELING FUN DRAFTING FRENZY (D) \$35 (NQA); \$45 Karen Kay Buckley Morning All levels

And you thought drafting was difficult! After this class you will feel comfortable drafting your own patterns. The freedom to draft your own patterns will open a lot of opportunities for you. We will draft 10 different pieced blocks during class. Come have a really fun and motivating time!

Kit fee \$10. Includes drafting paper.

Supplies: Plastic ruler. Bring all the sizes you have! 12" x 12" or larger plastic ruler square; Right angle triangle, at least 12" in length on one side, clear or frosted plastic recommended. (Art supply stores or office supply stores); Rotary cutting board (provides a smooth surface on which to draw); Eraser; Masking tape or repositionable tape; Colored pencils-three different colors; Mechanical pencil; protractor.

#731 THE FOUNDATION PIECED QUILT (M) \$35 (NQA member); \$45 Holice Turnbow Afternoon Beginner

Foundation piecing is not new to quilt making. It was a popular design for the Victorian Crazy Quilts or string quilts during the last century. This quilt is constructed on a fabric foundation. The use of exciting fabrics makes for a wonderful quilt. Students will use Foundation by the Yard panels and a graduated color palette of fabric. A sufficient amount of the piecing will be completed in class with the remaining to be completed at home. Finishing techniques will be described with samples for inspection.

Kit fee \$18. Includes panel and fabrics.

Supplies: Basic sewing supplies.



Continued on next page

Classes continued



NEW BEE CLASS

#732 LOW TECH HAND APPLIQUÉ (H) \$35 (NQA member); \$45
Donna Lynn Thomas Afternoon **Beginner**

Learn simple, old-fashioned appliqué skills that require no papers, no glues, no irons—just you, your needles, threads and fabrics. This is NOT needle turn appliqué. These skills are very portable and simple to do.

Kit fee \$10 includes all supplies except for fabric shears and silk pins, which students must supply.

#733 CJ TIPS AND TECHNIQUES \$10
NQA Judges Afternoon **All levels**

A panel of NQA Certified Judges will share lots of ideas for creating better, maybe even prize-winning quilts. Come see the quilts close up, ask questions, and soak up their expertise.

Supplies: Note taking materials.

Saturday, June 19

#801 THREAD SKETCHING (M) \$55 (NQA member); \$65
Nancy Prince Full day **All levels**

Sketching with thread is just way too much fun!! It's as simple as following a preprinted color coded design with a straight stitch – how easy is that? You, too, can let the artist within shine! So grab your thread and come join me for a bit of information and how to become the master of the straight stitch.

Kit fee \$9.50. Includes one piece 15" x 11" light crème or white Kona type cotton; One piece 15" x 11" piece of fusible interfacing; One piece 15" x 11" piece of OESD AquaMesh water-soluble stabilizer; One piece 15" x 11" piece of preprinted stabilizer.

Supplies: Sketching Thread – 40 weight rayon or polyester; Fence – charcoal, medium brown, medium taupe; Barbwire – dark gray; Fence grass – Dark, medium and light green (all in the same color family); Flower dirt – medium brown, medium taupe, light rust or variegated rust/brown; Flower leaves – dark blue/green; Flowers – bright yellow, dark orchid; Bring additional rayon or polyester threads in greens, browns, rust, orchid and yellow in your stash; 6" wooden or plastic machine embroidery hoop (available for purchase in workshop); Basic sewing supplies – scissors, 80/12 machine needles, tweezers, etc.

Please see fully annotated supply list at www.nancyprince.com.

#802 LEARNING TO LOVE TEMPLATES (M) \$55 (NQA member); \$65
Sally Collins Full day **Confident Beginner**

These will be the most accurate templates you have ever made, I promise! Templates are tools that give high rewards and improve our potential for both quality and custom work...they support total freedom in design and will expand your quilting experience. Using a traditional style block, this class will focus on how to MAKE accurate templates, how to accurately CUT FABRIC using those templates and then accurately SEW the block together.

Supplies: Appropriate thread color as we will open some seams; ungridded and unrolled template plastic (do not bring the kind you can iron on); permanent pen (not a Pigma pen); marking tool(s) that will show up on the wrong side of your fabrics; 1/16" hole punch or tapestry needle; Exacto knife or small Olfa box cutter; accurate rulers (I use the 3" x 18" Omnigridd ruler with the fine black line continuous grid all over it and the 4" sq. ruler with the same grid); rotary mat (regular one and a smaller one for sub-cutting); small cutter (18mm) in addition to your regular cutter; 12" flannel or batting covered foamcore board to lay out your work; seam ripper; scissors; fine (.4mm) pins; basic sewing supplies; **Fabric** – Use 100% good quality cotton. Bring a fat quarter of two fabrics that contrast – one for the star; one for the background – printed or solids. Solids are valuable to

Class project photos and supply lists can be found at www.nqaquilts.org/2010show.

For questions regarding class descriptions or supply lists, please contact the teacher directly.

use because they reveal any and all discrepancies unlike prints that can camouflage discrepancies. Remember this is a process class, not a project class.

#803 FINE FINISHES (M) \$55 (NQA member); \$65
Sarah Ann Smith Full day **All levels**

Learn to make a perfect mitered binding, straight grain bindings, double-fold bias bindings, bindings with piping, couched yarns and fabric accents, curved bindings, fused bindings, wacky raw-edge squares, and couched-yarn finishes! By the end of this class you'll have a "swatchbook" of samples including a wide assortment of styles and techniques to finish your quilts and quilted garments.

Supplies: (2) half yds. light colored fabric; ¼ yd. sharply contrasting solid fabric for binding; Thread – 1 spool to match binding, 1 spool to match mini-quilt; several contrasting spools; Rotary Cutter with sharp blade, Rotary cutting mat, and Ruler - at least 12" long and 3" wide; Sewing machine needles; Scissors, thread snips, seam ripper; ¼ yard fusible web (opt.); Marking pencil contrasting with binding; Pen to write on samplers; 1 yd. yarn; Note taking materials; sense of humor! Prepare mini-quilts before class.

PLEASE contact Sarah (sarah@sarahannsmith.com) for a fuller, annotated supply list and instructions on prepping mini-quilts.

#804 NQA 2010 MYSTERY QUILT (M) \$55 (NQA member); \$65
Rita Fishel Full day **Beginner**

Join us for a few hours of mysterious fun as Rita helps you follow the clues to her latest Mystery Quilt, designed specifically for NQA! Each sleuth will choose a pre-cut kit from the huge variety of kits available for the class. All kits will have different fabrics. Kits will complete a 60" x 70" quilt top and include the binding fabric. This class is geared for any skill level, and is particularly great for beginners or those who want to have fun with no stress and instant gratification! The mystery needs to be "solved" before you know which pattern you have chosen!

Kit fee \$64.94.

Supplies: neutral sewing (NOT quilting) thread; small scissors; seam ripper.

#805 SENSUOUS LINES AND CURVES (YM) \$55 (NQA member); \$65
Carol Taylor Full day **Confident Beginner**

Do you love the look of those really skinny lines and curves, but don't know how to make them? Now is your chance to learn. Carol shares the secrets of piecing them, and you can make the practice blocks into a lovely wall quilt full of those "sensuous lines and curves"! Start with piecing simple lines, cut improvisationally, on small pieces of fabric that will turn into 7-½" blocks. The middle section of "sensuous lines and curves" is made by couching and becomes the centerpiece for the quilt. All of this is done with no pinning and a minimal amount of measuring to free you up and allow you to think outside of the box. You'll also learn how to finish your quilts with facings instead of bindings. You'll be thrilled with the resulting small quilt, which you can do in any 4-5 basic colors you like.

Supplies: Contact Carol (ctquilts@rochester.rr.com) for a complete list with check off boxes and photos. This will make gathering your supplies easier.

#806 SAMPLIN' ANGLE-PLAY: NEW BLOCKS (M) \$55 (NQA); \$65
Margaret Miller Full day **Confident Beginner**

Learn to cut with the AnglePlay™ templates, including cutting half-size and pieced triangles. Make a number of sampler blocks, and get a glimpse of refreshing new ways of putting the blocks together.

Supplies: AnglePlay™ Blocks book; AnglePlay™ templates, Set One (or students may make templates A, B, C, and D using the diagrams in back of book before class) **NOTE:** Some blocks will also use templates from AnglePlay™ Templates, Set Two. There will be a few templates available for students to work with in the workshop, if they would like to do so before purchasing their own set. Sewing machine in good working condition, cords, extra needles; Straight Pins (thin ones); Rotary cutting supplies - cutter with sharp blades, spare blades, medium size cutting mat (12" Olfa rotating mat is ideal), 6x24" ruler, 6" square ruler; Design wall ("fuzzy" surface), wide masking tape to adhere it; **Fabrics:** half-yard pieces of five different values (lt, lt-med, med, dk-med and dark). Don't agonize

Classes continued

about fabric choices; bring fabrics that would make a pleasing set of quilt blocks. Don't forget a "zinger" or accent color (or, 1-2 prints that bring in an accent color); Optional - chair cushion to raise you to a comfortable sewing height.

#807 CELTIC APPLIQUÉ BY MACHINE (YM) \$55 (NQA member); \$65
Fran Kordek Full day All levels

Learn the basics of Celtic interlaced appliqué design by constructing this 12" block. The class project incorporates bias preparation, bias placement, and machine sewing techniques. The project can be finished as a pillow or framed with a simple Celtic border to make a small wall hanging.

Pattern fee \$5 for detailed instructions, pattern and some supplies.

Supplies: Rotary cutter, mat, and ruler; Sewing machine in good working order. A machine with adjustable zigzag stitch is preferred; Bias tape maker or bias bars, 1/2" or 3/8"; Thread to match Celtic design fabric; Iron and ironing surface; Basic sewing supplies - including a marker appropriate for background fabric that will withstand heat; plenty of pins; seam ripper, etc.; Fabrics: Background - 1/2 yd; Celtic design - 1/2 yd (may be solid, prints, plaids - should contrast with background); Optional: Fabric for design "windows" - 1/8 yd, or more if "fussy cuts" are used; Optional: Fabric for borders - 1/4 yd.

#808 STASHBASHER QUILTS (YM) \$55 (NQA member); \$65
Linda J. Hahn Full day All levels

Join Linda and her scrap bin to create this gorgeous scrap quilt. Learn some really cool ways to "bash that stash" as well as quick piecing techniques. This class is part color confidence, part design and part technique. The block used lends itself to numerous settings. It goes together really fast and easy.

Supplies: Basic quilting supplies; 72 matching pairs of 6" squares (suggest batiks or small prints that read solid - no large scale prints) - you can duplicate fabrics. You may also wish to bring some extras in that we will be mixing and matching fabrics. Your favorite marking tool - I use a Chaco liner (Clover) and a square ruler with 45 degree bias line (I use Omnigridd 9-1/2" square). Optional: 60" square of cotton batting to use as a portable design wall.

#809 AROUND THE TWIST (YM) \$55 (NQA member); \$65
Sandy Turner Full day All levels

The straight set Around the Twist traditional quilt pattern is paired with your favorite pictorial fabric/fabrics. Learn color and construction techniques for any size block. A formula will be presented which covers how to design your quilt pattern based on the scale of your pictorial fabric/fabrics.

Supplies: Sewing machine; rotary cutter, mat, and ruler; Colored pencils; Thread to blend with your chosen fabric; Design wall (flannel or batting 40" x 60"); Painter's tape; Straight pins; General sewing supplies; Fabrics - 1-1/2 yds. of pictorial fabric/fabrics (minimum 3" in scale); 1 yd. of two color families which will form the twists (These fabrics should not overpower the colors in the pictorial. If the pictorial background is dark, choose medium value fabrics for the twists or medium background fabric with dark fabric for the twists). NOTE: You may bring more than one pictorial fabric as long as they share the same background color and equal the 1-1/2 yards of fabric required.

#810 FOLK ART BIRD (H) \$55 (NQA member); \$65
Jo Morton Full day Beginner

Practice needleturn appliqué using the back basting method for placement of the motifs. This stitching method is very portable (a take-along project) and you will love the results. No templates! You will receive the directions to complete the quilt at home with your sewing machine. The class is about the appliqué, but you end up with a sweet small quilt to enjoy.

Supplies: Small sharp to the point fabric scissors 4" or 5"; Needle threader, Thimble; Pins (appliqué pins for the appliqué portion); Ott light (opt.); Fabric Scissors; A .7 or .9 mechanical pencil; Clover fine white marking pen - item #517; Thread recommendation - 100% cotton thread like Aurifil 50 wt or Presencia 50 wt in colors to match or blend with the fabrics to be appliquéd; Fabric - bring the background fabric pre-cut in an 10" x 12" rectangle (slightly oversize); you only need to bring the appliqué pieces and center background fabric unless you want to check out your choices with other students; 1-1/8 yd. - Border; 1 yd. - print for setting squares, triangles, and

inner pieced pointy border; Fat Quarter - for border cornerstones; Fat Quarter - dark red for inner pieced pointy border; smaller pieces of assorted prints to piece the scrappy Ohio Star blocks; 3 yds. - Backing; Batting - 100% cotton - Mountain Mist Blue Ribbon recommended for vintage appeal for either hand or machine quilting (can be obtained later). Light table for tracing the appliqué.

#811 GENTLE BREEZE (H or YM) \$55 (NQA member); \$65
Donna Lynn Thomas Full day All levels

Learn how to hand or machine piece these two beautiful blocks. These are examples of old beauties that don't lend themselves to rotary cutting. By learning how to use templates, you will open up a whole new world of forgotten blocks. Both hand and machine piecing will be taught - you choose the method you prefer. An assortment of hand piecing needles for you to try as well as threads and sandpaper boards will be provided.

Note: Please do not bring fabric for the entire quilt with you to class. Bring only fat quarters of the asterisked (*) fabrics for work in class or if you just want to try the process and not make an entire quilt.

Supplies: sewing machine (opt.); sewing machine thread (opt.); plastic template material and sharp craft scissors to cut it; needle threader; thread clips; seam ripper; silk pins; fabric shears; Fabric (for the entire quilt) - *1-1/8 yd. red print #1; *1/4 yd. red print #2; *1/2 yd. brown print #1; *1/4 yd. brown print #2; *3/8 yd. dark teal print; *3/4 yd. medium teal print; *1/2 yd. green print; *3/4 yd. light print; *1/2 yd. tan print; 1-3/8 yd. large brown floral; 1 yd. brown/green print; 5/8 yd. for binding.

#812 DESIGNING THE WHOLE CLOTH QUILT (D) \$55 (NQA); \$65
Holice Turnbow Full day All levels

Study the composition of the whole cloth (white-on-white) quilt and learn the techniques of drawing designs (feathers, cables and other motifs) which contribute to the beauty of this style quilt. Practice techniques for drawing the individual motifs and then create a 40" square design that can be used either as a single piece or become the center of a larger quilt.

Kit fee \$12.50. Includes most supplies needed for the class.

Supplies: pencil, eraser, straight edge.

#813 BASIC HAND APPLIQUÉ - FOLK ART FANTASY (H) \$55(NQA); \$65
Karen Kay Buckley Full day Beginner

Folk Art is an American tradition and this design evokes times gone by. The simple, elegant and flowing shapes create a wonderful quilt to hang on the wall or give to a loved one. The smoothness of the curves allows you to easily hand appliqué this 38" x 22-1/2" wall quilt. There are a few small areas which include reverse appliqué, just for a little more fun. Keep the Folk Art tradition alive as you stitch this wonderful little project.

Pattern fee \$13. Pattern will be sent; please trace on background before class.

Supplies: Scissors - paper, fabric; Sandpaper - fine grain; Clover 1/4" bias tape maker; Pigma marker; iron and pressing board; Press cloth; Rotary cutter, mat, and ruler; Silk pins or other appliqué pins; Water soluble glue stick; Fabric markers; Pencil; Emery board; 6" sq. of freezer paper or plastic template material; Fabric - *1/8 yd. brown; 1/8 yd. darkest rust; *1/4 yd. medium rust; *1/8 yd. gold; 1/3 yd. darkest purple (includes enough for strips around outside edge); 1/8 yd. each of 3 medium purples; 1/4 yd. for stems; 1/4 yd. for leaves; 3/4 yd. for background (* in these areas 2 different fabrics were used for variety).

Irons will be provided in the classrooms.



Continued on next page

Classes continued

#814 SIMPLY COLOR (D)

Becky Goldsmith

Full day

\$55 (NQA member); \$65

All levels

Have fun and play with color! This quilt was featured in an issue of American Patchwork and Quilting and is not in any of our books. I will provide a pattern for each student.

Supplies: *Book - I recommend this book but it is not required for class. [The New Appliqué Sampler](#) by Piece O' Cake Designs; Fabric for a 1-Day Color Class - Pre-wash all fabric before class. It appliques better! The more fabric you have, the happier you will be. Background Fabric - Cut at least 16 squares 10" x 10". These can be different fabrics or all the same fabric. Consider bringing more than one color choice for backgrounds. Appliqué Fabric - Bring a variety of scraps of fabric approximately 8" x 8" for flowers, flower centers, and leaves. Basic Sewing Supplies - Small, sharp, paper scissors; An ultra fine point Sharpie marker; One 10" x 10" square of clear upholstery vinyl in a medium weight. Keep the tissue paper that comes with the vinyl; One sheet of clear, heavy weight, self-adhesive laminate - available at most office supply stores or on our website ([pieceocake.com](#)). Get the single-sided sheets, not the 2-sided pouches. Avoid repositionable laminate; I will supply you with 2 needles and some 1/2" sequin pins. You will need additional pins. I prefer 1/2" sequin pins for pinning appliqué; White Chalk Pencil (I like the General's charcoal pencil in white); A General's Sketch & Wash pencil OR a Quilter's Ultimate Mechanical Pencil; A sandpaper board or bring a sheet of fine grain sandpaper if you don't have a board; Baggies for your templates; Bring a flannel or other design wall that is at least 50" x 50" and tape to hang it; Bring additional pins to pin pieces to your design wall; **Optional** - A light and an extension cord in case the room is dark.*

#815 BIRDS & BLOOMS IN TRADITIONAL APPLIQUÉ (H)

Linda Carlson

Full day

\$55 (NQA); \$65

All levels

Students of all skills choose their own comfortable skill levels to learn easy hand appliqué techniques for round curves, sharp or smooth leaves, dog tooth triangles, and reverse appliqué frames. Each block will smoothly graduate your needleturn and freezer paper appliqué skills.

Pattern Fee \$25 includes (5) 18-inch square original block, setting, and corner designs for a 55-inch square quilt.

Supplies: Please see Linda Carlson's Web site for a complete explanation.

www.lindacarlsonquilts.com/birdsandbloomssupplies.htm

#816 IMPROVE YOUR HAND QUILTING STITCH (H)

Mary Stori

Full day

\$55 (NQA); \$65

All levels

Learn to achieve small even stitches on the front and back of quilts. An in-depth discussion covering the many aspects that impact the stitch such as batting, needles, marking, hoops, and basting will provide a solid foundation to help you produce a fine quilting stitch. Mary will literally hold your hand as you learn the anatomy of the stitch, the WHY and HOW of every movement.

Supplies: Q-Snap frame (11" x 17" is most comfortable and is recommended by Mary) or a quilt hoop (approx. 14") It is not necessary to purchase a Q-snap frame for class, if you already own a quilt hoop, you may use it. 2 pieces of prewashed muslin and 1 batting piece to fit the hoop or frame - please avoid Warm and Natural, it's nasty to hand quilt! Bring Hobb's Thermore if you have it - again it's not necessary to purchase for class. Thimble; Quilting between - smallest size you have; Small scissors or thread clips; 1 spool quilting thread - color to contrast with muslin; optional - pencil and notepaper; Ott light and extension cord. Class features video projection.

#817 FLORAL SUN DANCE (H)

Linda M. Poole

Full day

\$55 (NQA member); \$65

All levels

Appliqué these happy, colorful Turkish-inspired flowers that stretch and dance in the sunlight. Linda teaches you her simple circle technique and how to easily break down appliqué pieces into sections and sew everything "in your hand" for easy travel. Linda guarantees your appliqué success!

Kit Fee \$15. Includes pattern, UHU water soluble glue stick, special toothpicks, pre-drawn circle on lightweight fusible interfacing, instructions, color photo, bias tape, appliqué needle.

Supplies: Pre-wash all cotton fabrics - 25" sq. light color for circle, 8" sq. print for vase, (2) fat eighths different greens for leaves, ass't. colors fat eighths or large scraps for flowers and vase handles; 9" x 12" cardboard for gluing surface; thread to match fabrics; scissors - fabric and paper; water soluble blue fabric marker.

#821 ADVANCED LONGARM FREEHAND (M)

Linda Taylor

Morning

\$75

Intermediate

Each student in this class will quilt a wall-hanging designed by Linda. It is a star sampler with a gorgeous peacock fern medallion in the middle surrounded with new freehand background designs and fancy feathers. If you've ever wondered what Linda's hands-on classes are all about, don't miss this one. You'll be proud to go home with the proof of what you can do!

Kit fee: \$20. See description in #501.

All Gammill longarm classes are hands-on; 2 students per head max.

#822 SURFACE TEXTURES (H)

Anita Shackelford

Morning

\$35 (NQA member); \$45

All levels

Discover how cording, padding and stuffed trapunto can add surface texture to your quilted designs. Create a Jacobean flower and berry design using all three of these raised work techniques.

Supplies: 14" block of prewashed, light colored cotton; 10" block of batiste; Small piece (at least 8" square) of Hobbs Heirloom Cotton batting for padded and stuffed work; Fabric marking pencil; White polyester rug yarn or 4-ply cotton (Lily Sugar and Cream) and #16 or #18 tapestry needle; Needle and contrasting thread for basting; Toothpick or small stuffing tool; Small, sharp-pointed scissors and seam ripper; Thimble and other basic sewing supplies.

#823 STARTING BLOCK (H)

Teri Henderson Tope

Morning

\$35 (NQA member); \$45

All levels

Start small and create this one block wall hanging. Learn this unique dimensional look and classic technique! With Teri's method, the intricate hand appliqué design is made fast and easy. The secret is to use large pieces of background fabric underneath the appliqué design for easier handling. Tiny seam allowances are a thing of the past! Beginners who love the look of appliqué can easily master this useful technique.

Pattern fee \$2 for an enlarged pattern of one of the twelve flowers from Teri's *Garden Nouveau* quilt (your choice of designs) **OR** purchase entire enlarged **pattern set for \$20.**

Supplies: *Fabrics - Washed and pressed; 14"x14" square of background fabric shown as navy blue in sample (cut this square at home); 13-1/2"x13-1/2" sq. of accent fabric cut into four triangles for borders; 13"x13" square of fabric for flowers; 13"x13" square of fabric for leaves; Scraps of yellow for flower centers; [To finish quilt you will also need 19"x19" squares of quilt batting and backing; 1/4 yd. binding fabric; not necessary to bring to class]; Light box; Appliqué scissors; #10 appliqué needles; Thread to match background fabric (DMC 50 weight cotton); Thread to baste; 3/4" glass head pins; Small iron and pressing mat; Fabric marker (I use archival quality gel pens that match appliqué fabric; please test to insure visibility on your background fabric before class).*

#831 COLLAGE QUILT (M)

Anita Shackelford

Afternoon

\$35 (NQA member); \$45

All levels

This is one of the most popular projects from our [Teens & Tweens](#) Book. See how you can use a collection of items that are personal or meaningful to create a one-of-a-kind wall quilt. We'll supply the batting and back. You'll use the **longarm machine** to add background texture to your quilt and to appliqué your T-shirt logo as a centerpiece for your design. Then it will be ready for the embellishments to make it your own! Young people age 12 and older; must be accompanied by an adult. Class is also open to adults.

Kit fee \$5.

Supplies: One fat quarter of background fabric; A favorite T-shirt you are not wearing any more; Embellishments that are meaningful to you or that fit the theme of your quilt; Scissors; Hand sewing needle and thread; Digital camera (optional).

#832 SILK SCREENING IS NOT JUST FOR SILK

Bobbie Bergquist

Afternoon

\$35 (NQA); \$45

All levels

Have you heard of Silk Screening and thought it was too difficult? Did you think it would cost too much? Would you like to be able to

Classes continued

personalize your clothing and/or quilts? It's easy and works on all fabrics – natural and man-made. You will learn how to use inks to color fabric and prevent bleeding, ways to expand your stash and add colors missing from fabrics and so much more.

Kit fee \$35. Includes various sample fabrics, 6 bottles of Tsukineko Ink (red, yellow, blue, green, white & black), work sheet and scraper.

Supplies: Wear old clothing. Bring latex gloves if you don't want to get ink on your hands. (Ink is water based and cleans up with soap & water) 1 large zip lock bag; trash bag; paper towels; tooth picks; can of shaving cream (lightly or unscented if possible, Dollar Store works best); plastic coffee stirrer, popsicle stick or similar tool; small paint brushes, or any other tool you would like to experiment with. Bring article(s) of clothing or fabric to apply silk screening. For clothing you will need a piece of felt or batting to place under the fabric you are screening to prevent bleeding onto the back of the garment. You may also bring additional specialty fabrics and/or clothing to try.

Contact Bobbie at joe@quilterstreasure.com for more information.

#833 LIBERATE YOUR LOGS (YM)

\$35 (NQA member); \$45

Wendy Butler Berns

Afternoon

All levels

The Log Cabin block is one of the wonderfully versatile blocks. There are infinite ways to construct this block. Come ready to explore the endless possibilities with Wendy's freeing, spontaneous, no-rule approach. Following demonstrations and examples, you will play with some of your favorites. You can choose to construct multiple sample blocks to take home for future reference, and/or focus on one or two favorites to construct a quilt top.

Supplies: Sewing machine and basic sewing supplies; Cutting board and rotary supplies; Iron and pressing surface; Fabrics from home for creating sampler blocks - 6 to 10 or more each of the various values; ¼ yd. cuts and/or fat quarters of the following values: light/lights, lights, medium light, mediums, medium darks, darks, various scale prints (small, medium, large), theme fabric, favorite fabrics that you have in your stash This could be up to 45 different fabrics not crucial, but fun to use many!

Lectures

#401 Panel Discussion Thursday, 6/17 8:30 A.M. FREE

Entering, Judging, and Surviving the Show!

Join in the discussion with our show judges, entry coordinator, and show director (if she stops moving long enough!) about how the quilts find their way to Columbus, how they are judged and the judging process, and how they find their way home to you again. Lots of useful information will be shared.

#402 Mary Stori Thursday 10:30 A.M. \$10

Viewed With a Smile – Humorous Quilts by Mary Stori

Do you think quilting has gotten a tad too serious? Mary says to “snap out of it. You are supposed to be having fun!” This lecture features mainly embellished quilts and includes an overview of their particular construction concerns! Join Mary as she describes her work from wacky inspirations to the finished piece.

#403 Sandy Turner Thursday 1:30 P.M. \$10

I Love The Fabric, But What Do I Do With It?

Sandy's love of pictorial fabric in combination with traditional quilt blocks is the subject of this lecture. This is a “teaching lecture” and includes pattern handouts, and construction techniques, as well as quilt samples.

#404 Glen Taylor Thursday 3:30 P.M. \$10

Less is More!

Everyone appreciates a beautiful art quilt ... but where do inspirations come from? You will be surprised! Glen will share his tips on creating a design with familiar themes, but “outside the box,” and explain how to use abstraction to simplify the final image, presenting several designs from concept to creation.

#405 Holice Turnbow Friday, 6/18 8:30 A.M. \$10

Creativity – Developing Your Own Design Style

This lecture takes a fun approach to the subject of creativity while sharing with the audience the basic concepts of developing a sense and confidence in ones ability to do original design work. The lecture is light-hearted as well as serious with some “show-n-tell” to illustrate the concepts discussed.

#406 Amy O. Korn Friday 10:30 A.M. \$10

The Nancy Page Quilt Club

“The Nancy Page Quilt Club” was a syndicated column written by Florence LaGanke Harris of Cleveland, Ohio between 1928 and 1945. The column provided 27 series quilts and many single block patterns and promoted a high standard of quilting in women across America. Come learn more about this creative designer – and feel free to bring quilts and patterns of her designs to share!

#407 Nancy Prince Friday 1:30 P.M. \$10

So What Is Thread Painting All About?

Come take a fun and thought-provoking journey with Nancy into the world of thread painting. While it can look complicated, in fact, thread painting is actually very easy. The lecture will demonstrate her step-by-step techniques to show you just how simple the technique can be. And finally the trunk show will detail a short history of some of her thread painted quilts.

#408 Karen Kay Buckley Friday 3:30 P.M. \$10

To Border or Not To Border, That Is The Question

During this lecture Karen will discuss if a quilt needs a border and how to select a border for your quilt. She will also explain how she designs many of her borders. She hopes that this will inspire you to think about how to enhance your quilt with the right border.

#409 Cindy Oravec Saturday, 6/19 8:30 A.M. \$10

What's Weird and Wacky, Old and New In The Sewing World

Watch Cindy pull all sorts of unusual projects from her sewing bag of tricks. The stories will be as wild and wacky as the projects. What fun!



Continued on next page

Lectures continued

#410 Wendy Butler Berns Saturday 10:30 A.M. \$10
Creating Captivating Color in Our Quilts

Wander with Wendy as she guides you through an eclectic collection of traditional and contemporary quilts, all with a common thread - captivating color. She will offer ways of taking a few small steps or multiple bold ones in experimenting with color. Wendy will then explore ways of approaching the color challenge using a tried and true tool - the color wheel.

#411 Linda Taylor Saturday 1:30 P.M. \$10
Tell Me About The Longarm Quilting Business

Can you make money in a longarm quilting business? How do you begin? What about pricing, advertising, etc.? Maintaining a professional attitude is the best way to start a longarm quilting business according to Linda V. Taylor. She will show and tell everything she has learned from setting up, owning and operating a successful quilting business. Whether you work alone, with a partner or spouse, and/or manage employees, you will garner many new insightful ideas to start and help your business grow from this successful experienced professional. She literally wrote the book on longarm quilting!

Meet the Faculty

Bobbie Bergquist, Rindge, NH www.quilterstreasure.com

Bobbie Bergquist is a quilt maker who strives to keep things simple, quick, and fun. She has taught in 38 states including Hawaii, and conducts workshops and seminars at many quilt shows, guilds and shops. Bobbie's husband, Joel, and son, Brian, of Quilters Treasure provide the hand painted marble fabric used in her stained glass quilts.

Wendy Butler Berns, Lake Mills, WI www.wendybutlerberns.com

Wendy is a quilt artist, teacher, and lecturer who, since 1997, has taught and lectured about the art of quilting regionally and nationally. Wendy's quilts are noted for their bold use of color, unusual fabrics, and a combination of unconventional techniques. Quilt designs are original and they fluctuate between traditional with a twist and contemporary art quilts. They are inspired by her desire to capture the colorful yet changing world around her. Wendy received the 2009 Jewel Pearce Patterson Scholarship.

Karen Kay Buckley, Carlisle, PA www.karenkaybuckley.com

Since Karen's first quilting class in 1982, she has sought every quilting class possible to improve her techniques. In 1986, she opened her own quilt shop and by 1988 began creating her own classes and patterns. Karen has created more than 250 quilts and her work has received numerous awards including seven Best of Show. In 1997, she was voted teacher of the year by the Professional Quilter Magazine. Her work has been featured in numerous magazines and calendars, and she is the author of five books.

Linda Carlson, Mexico, MO www.lindacarlson.com

Linda Carlson has been involved with quiltmaking since 1975. Her work has evolved into four books, focusing on appliqué and the four-block quilt. Presently, she is working on another book while teaching and judging across the country, and designing fabric for Benartex. Her students enjoy her good sense of humor, guiding and flexible teaching approach, patience and ability to allow and encourage creativity.

Sally Collins, Walnut Creek, CA www.sallycollins.org

Sally is an award-winning quiltmaker, teacher and author who has been quilting since 1978. She is most recognized for her quality workmanship, attention to detail and teaching expertise that reflect her continual love and interest in the process of quiltmaking, illustrated and explained in detail through her books. Her classes focus on how to achieve quality workmanship in any scale and are developed to help students advance and improve their own creative and technical skills as well as how to critique and correct their own work.

Rita Fishel, Chillicothe, OH www.creationssewclever.com

Rita, nationally known speaker and teacher, owns the very busy shop, Creations SewClever in Chillicothe, OH. After many years in the desert Southwest, Rita and family relocated to a charming farm in rural southern Ohio. In late 1992 she purchased a small clothing and fabric business. Many classes were offered in this new shop, and by far the most popular and the most fun were Rita's Mystery Classes - which became a book from AQS.

Becky Goldsmith, Sherman, TX www.pieceocake.com

Becky has a degree in interior design and an interest in all things textile. She met Linda Jenkins, her partner in Piece O' Cake Designs, at a meeting of the Green Country Quilters' Guild in Tulsa not long after she started quilting. They have been friends ever since and started Piece O' Cake in 1994. Making quilts is interesting, fulfilling, and challenging. Running the business with Linda is exhilarating. This is not what she thought she would be doing with her life when she graduated from college. This is so much better!

Linda J. Hahn, NQACT, Manalapan, NJ www.twocountryquilters.com

Linda has been quilting for over 15 years and teaching just about as long. She has a way of taking what looks complex and breaking it down into very easy steps. Her classes are fun and empowering - her rule... No Agonizing! Linda is the 2009 NQA Certified Teacher of the Year. She attained her teaching certificate in 1999. She has been nominated for the Professional Quilter Magazine Teacher of the Year award three times.

Klaudeen Hansen, NQACJ, Sun Prairie, WI

Teaching is Klaudeen's greatest interest, and teaching is where you will find her when she isn't judging, training future NQA judges, designing quilts, editing the Quilt Art Calendar series, chairing the AQS competitions or doing many other related activities. No wonder she has earned a place in Who's Who in American Quilting!

Fran Kordek, NQACJ, NQACT, Elkins, WV www.subtleendeavors.com

Fran has been making and designing quilts since 1974. Teaching quiltmaking since 1983 and judging since 1994, in 2003, she was honored as the first recipient of the NQA Certified Teacher of the Year Award, and in 2005 was a nominee for The Professional Quilter magazine's Teacher of the Year. Her work has been exhibited and has won awards regionally and nationally. She markets her designs under the name Subtle Endeavors. Fran has been active in the documentation project of West Virginia's pre-1940 quilts.

Meet the Faculty continued

Margaret J. Miller, Bremerton, WA

www.millerquilts.com

Margaret is a studio quiltmaker who travels widely, giving lectures and workshops on color and design that encourage students to reach for the unexpected in contemporary and traditional quiltmaking. Her presentations are known for their enthusiasm, humor, and sincere encouragement of quiltmakers at all levels of skill and experience.

Jo Morton, Nebraska City, NE

www.jomortonquilts.com

Introduced to quilting in 1979, Jo hasn't put down a needle since. She began teaching quiltmaking in 1982 and by 1985 began creating small quilts with the charm of the antique, or 'new quilts that look olde.' In 1995 she began her quilt pattern business, and teaching and lecturing for quilt guilds, quilt shops and quilting retreats. Jo has written and published 18 books as of May 2009. (working on #19 for early 2010 release) and she designs for Andover fabrics.

Cindy Oravec, Cortland, OH

www.quiltersfancy.com

Cindy is a writer by trade, but she has always found solace in working with her hands. She learned as a young child that if she were ever bored or lonely, she could always create with her hands, occupy her mind and find peace. Today, Cindy enjoys owning Quilter's Fancy, writing extensively about embellishing techniques, and teaching her three-dimensional flower making techniques while meeting stitchers from everywhere.

Linda M. Poole, Milford, PA

www.lindampoole.com

Linda has always felt privileged to have been born into a talented and loving, generous European family who always put their family first when it came to teaching freedom of artistic expression. This has fueled her passion for travel, teaching and sharing her experiences with people around the world. Linda is the author of three quilting books and a designer for Avlyn fabrics.

Nancy Prince, Orlando, FL

www.nancyprince.com

Nancy, specializes in thread painting. Her anyone-can-do-it approach to thread painting is fun, easy and a new way for quilters to broaden their quilting experience. Her quilts have won Best of Show, Viewer's Choice, Artistic Merit, Best Machine Workmanship and Judge's Recognition. Nancy is totally addicted to thread painting and her enthusiasm in workshops can be contagious!!! Students comment on her commitment to one-on-one attention and her upbeat attitude.

Anita Shackelford, NQACJ, Bucyrus, OH

www.anitashackelford.com

Anita Shackelford has been a quiltmaker since 1967 and began teaching in 1980. She is an internationally recognized teacher and lecturer who loves combining appliqué and fine hand quilting to create new quilts in 19th century style. She also enjoys using her sewing machine for many parts of the creative process and has recently added longarm quilting to the mix. She has authored nine books and her quilts have been exhibited widely, winning many awards, including twelve Best Of Show and many for workmanship.

Sarah Ann Smith, Camden, ME

www.sarahannsmith.com

Sarah has become a fervent art quilter, producing a line of quilting patterns that draw on quilting's traditions yet celebrate the artistic individuality of the quiltmaker. Her extensive life-long travel and love for the diverse peoples and places in the world infuse her art. A firm believer that it's not a quilt until it is quilted, Sarah stitches intensively on her home sewing machine, using a huge variety of threads to enhance the image created on or in the cloth. Her first book, *Threads Unraveled*, was introduced in Houston in the fall of 2009.

Mary Stori, Clyde, NC

www.marystori.com

Mary is an internationally recognized quiltmaker, fashion designer, instructor, lecturer, and quilt show judge who has authored a cookbook, six quilt books and a DVD, *Mary Stori Teaches You Beading On Fabric*. Mary was named 2004 Teacher of the Year by The Professional Quilter magazine. Her work is often humorous, generously embellished, and displays fine hand quilting. She loves the challenge of creating one-of-a-kind quilts and fashions. Traveling worldwide to present lectures and workshops keeps her motivated!

Carol Taylor, Pittsford, NY

www.caroltaylorquilts.com

An internationally-known, award-winning quilt artist, Carol approaches her quilt making with intensity and boundless energy. Vibrant colors, striking contrasts and machine quilting distinguish the more than 496 quilts she has created since she began in 1993. Carol has won six Best of Show awards in her career – with six different quilts! A teacher by degree, and outgoing by nature, Carol's classes are said to be "fun, motivational, and non-threatening."

Glen Taylor, Scottsdale, AZ

Glen began his journey into art quilting after helping his wife, a professional longarm quilter, with one of her award-winning pieces. Being an architect and an artist has helped him in his transition to designing and creating art quilts. In addition, Glen is also a well-known dyer of custom fabric, much of which he uses in own pieces. He has made a specialty of teaching the principles of design and color theory in an easy and understandable manner.

Linda V. Taylor, Etna, WY

www.lequilters.com

Linda is a highly awarded longarm machine quilter whose work has been displayed in many venues and published widely in quilting magazines and books. Linda has been quilting for more than 20 years and is known and respected as one of the innovators of the art of longarm machine quilting. She has appeared on more than 60 segments of television programs with popular TV quilting personalities and now has her own PBS television show, *Linda's Longarm Quilting*. She has produced how-to DVDs, five books on longarm techniques, more than 140 continuous line patterns, and the handbook on longarm quilting, *The Ultimate Guide to Longarm Machine Quilting (C&T)*.

Donna Lynn Thomas, NQACT, Bella Vista, AR

Author of eight books on precision rotary cutting and machine piecing, Donna's first and continuing love has been hand work. Her newest book, *Portable Patchwork*, reintroduces the low-tech hand piecing skills of yesteryear and integrates them with our new and modern machine skills. A national and international teacher, Donna has contributed articles to many publications.

Teri Henderson Tope, Worthington, Ohio

www.materialgirldesigns.com

Quilting and sewing have been in Teri's life for so long that she really can't remember not having a needle and thread in her hands. In the last 25 years, she has mostly been a quilter and hand appliqué enthusiast. She has displayed quilts in national and international venues, winning a ribbon or two. Teri just published her first book with AQS, *Appliqué in Reverse*. She finds no greater joy in life than simply putting needle and thread to fabric, and to sharing this with others.



Continued on page 21

Registration Form

41st Annual NQA Show — Columbus, Ohio — June 17-19, 2010

- ➔ ➔ ➔ See important pre-registration information on page 17.
- ➔ Fully complete this form. Use a separate form for each person. Form may be photocopied. **MAKE A COPY FOR YOUR OWN RECORDS.**
- ➔ Payment including registration fee must accompany this form. Make check or money order payable to: **NQA.**
- ➔ No telephone or e-mail registrations will be accepted.
- ➔ Questions: Judy (jtaylor359@aol.com) or 480-683-2331
- ➔ Pre-registrations must be **postmarked before May 26, 2010.** After May 26, all registrations will be processed at the Show Registration Desk (Hall C Foyer, Convention Center). Desk will open at 12 Noon on Wednesday, June 16.
- ➔ **Daily show general admittance cannot be pre-purchased.**

Admission: [NQA members only]

___ NQA member 3-day pass \$10.00 ea. \$ _____
 ___ NQA spouse 3-day pass \$10.00 ea. \$ _____

Print Spouse Name _____

Admission TOTAL \$ _____

Lectures:

Circle the code of each lecture you wish to attend. \$10.00 each

#401 (no charge) #402 #403 #404 #405 #406 #407

#408 #409 #410 #411

Lectures TOTAL \$ _____

Classes:

- ➔ List code of each class you wish to attend, plus second and third choice.
- Include payment for first choices only.**

	Full-day	Morning	Afternoon
Wednesday, June 16	_____	_____	_____
Thursday, June 17	1 st _____	_____	_____
	2 nd _____	_____	_____
	3 rd _____	_____	_____
Friday, June 18	1 st _____	_____	_____
	2 nd _____	_____	_____
	3 rd _____	_____	_____
Saturday, June 19	1 st _____	_____	_____
	2 nd _____	_____	_____
	3 rd _____	_____	_____
	Classes TOTAL	\$ _____	

I volunteer to be the aide for my class # _____ or my class # _____.

Food Events:

- ➔ If you wish to pre-register **ONLY for the following food events**, you may do so without paying the registration fee. You will receive tickets for these events; you will NOT receive a show pin or tote.

___ #503 The Preview Party \$ 30.00 ea. \$ _____
 ___ #504 Thurs. Night Gathering \$ 34.00 ea. \$ _____
 ___ #505 The Friday Dinner \$ 30.00 ea. \$ _____
Annual Meeting Box Lunch \$ 12.00 ea. \$ _____

Please see description on page 3. Circle one choice.

Turkey wrap Veggie wrap Mandarin Chicken salad
Food Events TOTAL \$ _____

Liability and Indemnification Agreement: To the maximum extent of the law, your participation in any NQA classes, lectures, or events, paid or gratis, is conditional on your agreement to indemnify NQA, its employees, volunteers, and associated contractors from all liability, including agreeing to never make any claim regarding harm to person or property, loss, or injury to you or accompanying minors, against NQA, its employees, volunteers, and contractors for any reason. Your signature confirms your agreement.

Signature _____

*REQUIRED FIELDS – Please Print Legibly

NQA ID# _____ (found on your NQA Quilting Quarterly label)

*Name _____

*Address _____

*City _____ *State _____ *Zip _____

*Phone _____

*E-mail _____

This will only be used for communication regarding registration questions, notifications, and confirmations.

CANCELLATION POLICY

- ➔ Registrants must cancel by April 12, 2010 to receive a refund, less the non-refundable registration fee.

- ➔ **Cancellation Insurance** may be purchased for \$20. All fees, less the non-refundable registration fee, will be refunded up until May 26, 2010 with the purchase of this insurance.

- ➔ No refunds of any kind for any reason will be made after May 26, 2010.

- ➔ If a class is cancelled by NQA due to lack of enrollment, you will be given an opportunity to register in a different class or a refund will be made.

TOTALS

___ Admission [3-day member passes only] \$ _____
 ___ Lectures \$ _____
 ___ Classes \$ _____
 ___ Food Events \$ _____
 ___ Cancellation Insurance [optional - \$20] \$ _____

NON-REFUNDABLE REGISTRATION FEE \$ 15.00
 (Includes show pin and tote)

___ **NQA Membership Dues** \$ _____

TOTAL (payment must be enclosed) \$ _____

**Dues listed on Membership Form on page 22. Please fill out completely and send with Registration Form. This qualifies you for NQA member prices.

My check or money order is enclosed.

Check amount \$ _____ Check # _____

Charge _____

Card Number

___ - ___ MasterCard Visa

Exp. Date

Cardholder's Name (PRINT) _____

Cardholder's Signature _____

I will accept e-mail confirmation of my classes and any additional show or class-related materials.

Mail completed form and payment to:

Judy Taylor, NQA Registrar
14114 E. Milton Ct.
Scottsdale, AZ 85262

Information at a Glance

SHOW LOCATION AND HOST HOTEL

Hall C, Greater Columbus Convention Center

400 N. High Street, Columbus, OH 43215
www.columbusconventions.com

Hyatt Regency Columbus

350 N. High Street, Columbus, OH 43215
800-233-1234
www.nqaquilts.org/2010show (follow link)

SHOW AND VENDOR MALL HOURS

Thursday, Friday, Saturday
June 17, 18, 19
9 A.M. – 6 P.M.

ADDITIONAL INFORMATION

Contact the following for questions concerning:

Registration – Judy Taylor jtaylor359@aol.com or 480-683-2331

Quilt Entry – Jennifer Perkins judgingcoor@nqaquilts.org or 712-755-5383

All other show-related issues – Diane Pitchford showdirector@nqaquilts.org or 480-390-9900

IMPORTANT PRE-REGISTRATION INFORMATION

→ Workshops fill on a “first come, first served” basis. There will be no waiting list.

Note: Kit, materials, and pattern fees are paid **in class** to teacher.

→ Confirmations will be mailed to registrants unless e-mail acceptance is marked on your registration form.

→ Seats for the Preview Party, the Thursday Gathering, and the Friday Dinner are available on a “first come, first served” basis. Space is limited for these events. As long as it is available, a seat may be purchased at the Show Registration Desk during show hours.

→ Note availability of pre-registering for food events **ONLY** without registration fee. See Registration Form for details.

→ **Cancellation Insurance** is available. Please see details below.

CANCELLATION INSURANCE

Because circumstances can change, we offer Cancellation Insurance. Payment of the \$20.00 fee guarantees you the option of canceling your pre-registration on or before Wednesday, May 26, 2010 and receiving a full refund less the \$15 registration fee. This is payable with your initial registration **only** - **insurance cannot be added after your initial registration has been processed.**

Without the insurance, refunds – less the registration fee – will be made only until Monday, April 12, 2010.

No refunds will be given for any reason after Wednesday, May 26, 2010.

No Exceptions. All cancellations must be made in writing and received by the show registrar on or before the appropriate date.

ON-SITE SHOW REGISTRATION

Registration Desk, Hall C Foyer, Greater Columbus Convention Center

Wednesday, June 16	12 Noon – 5 P.M.
Thursday & Friday, June 17, 18	8 A.M. – 5 P.M.
Saturday, June 19	8 A.M. – 12 Noon

LODGING

Special NQA rates are available at our host hotel, the Hyatt Regency Columbus, as listed above. Call and ask for the NQA rate or access through the NQA website.

Other facilities, with an NQA room block near the Convention Center, are the following. **Request the NQA rate.**

Crowne Plaza Hotel Columbus Downtown 800-338-4462

Red Roof Inns 800-733-7663

Drury Inn & Suites Columbus Convention Center 800-325-0720

TRANSPORTATION

Downtown Columbus is easily accessed from Port Columbus International Airport and from the surrounding major highways. Downtown shuttle service is available from the airport. Parking is plentiful in the Convention Center area. A map can be accessed at www.experiencecolumbus.com. Click on the Getting Around button and then the Downtown Columbus Visitors Map (PDF). A map of the surrounding area, Greater Columbus Visitors Map (PDF), is also available.

SACK SITTERS

A place to store your belongings and purchases, for a small fee, will be provided on the show floor. **We must regretfully prohibit wheeled shopping bags from the show floor. They are a safety hazard and will not be allowed.**

SCOOTER RENTAL

Information regarding scooter rentals will be available on the NQA Web site www.nqaquilts.org/2010show.

QUILT SHOW ENTRIES

Quilts and quilted clothing may be submitted by both NQA members and non-members. Please note that quilt size is considered only in the Miniature category. Other categories are determined by the quilt's technique or intended use, not size. An entry form is included in this brochure. If you wish to enter more than one item, you may photocopy the form or download it from the Web site. One form is needed per entry.

QUILT APPRAISALS

If you wish to have your quilt(s) appraised while displayed at the NQA show in Columbus, or to bring in quilts for appraisals, please contact Amy Korn (614-891-8008 or AmyOKorn@hotmail.com). Amy, a certified AQS appraiser, will conduct both hanging and walk-in appraisals. She will be located on the second floor of the Convention Center C-pod from 12:30 to 3 P.M. daily. Your quilt appraisal is for insurance purposes unless you request another type of appraisal. The cost of insurance appraisal is \$40 per quilt.

LITTLE QUILT AUCTION – to benefit the NQA Grant Program

At 7:30 P.M. on Friday, June 18, the Little Quilt Auction will begin in the Union Room of the Hyatt Regency Hotel. The generosity of contributors and buyers in the past has made this an eagerly anticipated tradition at the Annual NQA Show.

We cordially invite you to be an important part of this exciting evening by donating one of your creations. Miniatures, doll quilts, and small wall hangings make excellent donations. Please limit the size to no more than 28” on any side. All of these quilts will be available for viewing on the show floor prior to the live auction. A Viewer's Choice ribbon will be awarded to both the maker and to the winning bidder for that quilt.

At the discretion of the committee and directed by the number of entries, a selection of these quilts will be offered at Silent Auction each day of the show. Bidding on the show floor for this event will begin at 9 A.M. and end at 3:30 P.M.

Please sign or permanently label the back of your donation quilt, and **include the LQA Entry Form found on page 23**. This information will be used in the LQA brochure and for commentary during the live auction.

Donations must be received by May 15, 2010 to be included in the brochure. Late donations will be held for the next auction. A receipt for the monies raised will be provided at the conclusion of the auction for your personal records.

For any questions concerning the LQA, please contact the NQA office at nqaquilts@sbcglobal.net or 614-488-8520.

Mail your quilt to arrive on or before May 15, 2010 to:

NQA - LQA
4380 Allen Drive
Columbus, OH 43213



See you at the Auction!!

Quilt Entry Instructions

GENERAL INFORMATION

The National Quilting Association, Inc. has sponsored a quilt show and competition for 41 consecutive years. Entries are evaluated by a panel of three NQA Certified Judges. A printed evaluation form is returned for all entries. Ribbon awards are given at the discretion of the judges. A participation ribbon and commemorative quilt label are presented to all entrants.

ENTRY RULES – Please read carefully

1. Entry forms must be **received** by May 1, 2010, and will be accepted until 400 entries are received. Allow time for mailing. After this, all paperwork, photos, and fees will be returned.

2. All entries must be clean, free of smoke or odor, and constructed of fabric. All entries must contain quilting except category #10-“Other,” which may or may not contain quilting.

All quilt entries must have hanging sleeves. See directions for sleeves under Preparing Show Entry.

3. Entries must have been completed after January 1, 2005, and cannot have been exhibited at a previous national NQA show.

4. NQA reserves the right to refuse, and assumes no liability for, entries that require special handling. **Quilts must be able to be folded.** Please, **NO** fragile embellishments, special hanging apparatus, frames, etc.

5. Limit of one item per category per entrant; one category per item. Except for category 14, quilt size does not determine category; intended use of the quilt, construction techniques, and/or number of makers are the determining factors.

6. **All quilts must be entirely the work of one person unless entered in categories 11, 12, 13, or 16.**

7. Entries that do not meet these rules will not be judged or exhibited. Entrants will be notified of disqualification as soon as possible.

8. Entries placed in an incorrect category by the entrant will be evaluated and displayed, but will not be eligible for any awards. It is not the intent of NQA to exclude any entries that meet the requirements. Any entry with surface embellishments should be entered under major construction technique, unless it is a duet or group quilt.

9. Entry fees are non-refundable.

10. Quilts that arrive after June 11, 2010, will be returned unopened.

11. In order to make the process of conferring awards more equitable for all entrants regardless of category, NQA reserves the right to award multiple ribbons where the number of entries in that category is disproportionately large in comparison to the others. At NQA's sole discretion, these categories may be sub-divided by **size** into two sub-categories.

12. Quilt may not measure more than 108" on the **hanging** side.

Questions? Please direct quilt entry questions **ONLY** to: Cindy Erickson at 402-592-7765 or judgingcoor@nqaquilts.org.

ENTRY CONFIRMATION, SHIPPING, AND RETURN

You will receive both a “Confirmation of Exhibit” notification (e-mail or postcard) and a shipping packet. The latter will contain all information and items needed for shipping your entry. **Please, do not ship your entry before receiving this shipping packet, which will arrive on or about May 14.**

In-person pick-up will NOT begin before 7:30 P.M. on Saturday, June 19.

Entries will be return shipped Monday, June 21. If you do not wish to have your quilt return shipped by NQA via Fed Ex Ground (tracked, with signature required), you must enclose a **pre-paid shipping label** for the carrier of your choice when you send your quilt to NQA. Foreign entries will receive additional instructions.

PREPARING SHOW ENTRY

Bed and wall quilts must have a sleeve attached (4" opening; sewn or basted securely, top and bottom of sleeve) to the back of the quilt. The top of the sleeve must be no more than 90" from the bottom of the quilt. Miniatures should have a sleeve or loops appropriate to their size. **ENTRIES RECEIVED WITHOUT SLEEVES OR SLEEVES IMPROPERLY ATTACHED WILL NOT BE EXHIBITED.**

Entries must be labeled with name of entrant or maker. Quilted clothing requires a label on each piece of the ensemble. For fairness in judging, you are required to baste a piece of fabric over the name(s) of the quilt maker(s) or entire label before sending the entry.

PACKING THE BOX

Each entry – enclosed in a plastic bag of appropriate size – must be shipped or delivered in a separate box, of sturdy material, appropriate to the size of the entry. ****NO dress boxes. DO NOT USE PACKING PELLETS OF ANY KIND.**

We strongly urge shipment of your entry by a tracking and delivery confirmation method.

INSURANCE

NQA will provide the following “Standard Insurance Coverage” for your entry:

- \$500 - for quilts 70" and greater on the short side
- \$250 - for clothing and quilts less than 70" and greater than 24" on the shortest side
- \$100 - for quilts 24" or less on the shortest side

If you desire more than “Standard Coverage,” please be certain to include your quilt on your homeowner's policy or to secure additional insurance through your agent.

Deadline

Entry form must be **received** by May 1, 2010. Allow time for mailing. Send entry forms, with photo, to:

**NQA Entries
1403 10th St.
Harlan, IA 51537**

Please notify Entry Coordinator, Jennifer Perkins, at 712-755-5383 or quiltentry@nqaquilts.org of any decision to withdraw an entry after its acceptance into the show.

Quilt Entry Form

Make a copy for your records.

The National Quilting Association, Inc. • 41st Annual Quilt Show • Columbus, Ohio • June 17-19, 2010

A separate entry form must be completed for each item entered.

All entry forms must be RECEIVED by May 1, 2010. Allow mailing time. Read Quilt Entry Instructions for rules.

SECTION A: ENTRY IDENTIFICATION (Please print or type. Use additional page if necessary.)

Entrant's Name _____ Entry made by _____

Address _____ Entry quilted by _____

City, State, Zip _____ E-mail _____

Day Phone _____ Evening Phone _____ 5-digit NQA member ID# _____

(found on your Quilting Quarterly label)

Check all that apply to quilting of this entry: hand quilted stationary machine (quilt moved by hand) track-mounted machine (machine moves over quilt)

Entry title _____ Year completed _____

Size (inches) width _____ length _____ Description for catalog (25 words or less) _____

Design Source _____

Attach a PHOTOGRAPH (non-returnable; a photograph, not a slide; digital computer print-out is acceptable) of this entry for insurance/record-keeping purposes only. Professional photo not needed. Item must be recognizable by color and pattern.

SECTION B: ENTRY CATEGORIES Circle the ONE category for this entry. See definitions on reverse side.

1. Bed Quilt, Pieced

6. Wall Quilt, Mixed Techniques

11. Duet Quilt, Bed

2. Bed Quilt, Appliquéed

7. Pictorial Quilt

12. Duet Quilt, Wall

3. Bed Quilt, Mixed Techniques

8. Art/Innovative Quilt

13. Group Quilt

4. Wall Quilt, Pieced

9. Scrap Quilt

14. Lynn Harris – miniature quilt

5. Wall Quilt, Appliquéed

10. Other (see definitions)

15. Clothing (# of ensemble pieces _____)

* must be entirely the work of ONE person

16. Chapter Row (Chapter ID # _____)

SECTION C: ADDITIONAL INFORMATION

By my signature below, I agree to abide by all conditions stated on this entry form and the accompanying instructions. I also grant The National Quilting Association, Inc. the right to photograph this entry for NQA files, publicity, education, and/or promotional purposes in either print or electronic media.

Signature _____

Date _____

By my signature above, I give permission to have my contact information (phone and/or e-mail address only) given to professional interested parties, such as quilt magazine or calendar editors. Please check one. Yes No

Hometown Newspaper: _____

Address: _____

Please check all applicable items included with this form (one form per entry).

Make check payable to NQA.

Fed Ex Ground (tracked, signature required) return shipping is included in your entry fee.

If you wish use of another carrier, see Shipping Information in the Entry Instructions.

Foreign entries need additional arrangements. Shipping packet will contain these instructions.

\$20 NQA member entry fee Check # _____ Photograph of entry

\$25 Non-member entry fee Check # _____ Photograph of entry

Entry form and check, with photo,
must be received by May 1, 2010:

NQA Entries
1403 10th St.
Harlan, IA 51537



Definitions and Awards

Definitions

Bed Quilt: Quilt intended for use on a bed.

Wall Quilt: Quilt intended for display on a wall.

Pieced: Piecing predominates over other techniques in amount or effect.

Appliqué: Appliqué predominates over other techniques in amount or effect.

Mixed: A quilt where a fairly even amount of multiple techniques, not including quilting and trapunto, is used to develop the design of the top.

Other: A quilt where one special technique is used to develop the design of the top such as whole cloth (with or without trapunto), surface design, crazy quilt, cathedral window, embroidered, etc. Unquilted entries will not be considered for Best of Show awards.

Lynn Harris: Miniature, scaled-down version of a large quilt design; maximum size 24" x 24" or 96" perimeter.

Scrap: Quilt top must contain at least 60 different fabrics; wrong side of fabric and quilt back do not count in this number.

Pictorial: A quilt that represents a recognizable image of a person, place or thing; any size.

Duet Quilt: A quilt that has two persons involved in its completion. Includes all techniques, as well as quilting by a person other than the maker of the top.

Group Quilt: A quilt that has more than two persons involved in its completion. Involves all techniques, as well as quilting by a person other than the makers of the top.

Art/ Innovative Quilt: Your original design reflecting innovative construction and design techniques, theme or subject matter, and/ or materials. No commercial patterns or copies of previous works. Quilts must be made of fabric, have three layers and contain quilting. A quilt based on traditional patterns and designs should be entered in another category.

Quilted Clothing: Entry must be a complete ensemble; featured garment must be quilted; no part of the ensemble may be purchased ready-to-wear; vests alone do not qualify as an ensemble. Garments will not be eligible for Best of Show awards.

Chapter Row: Entry represents the NQA Chapter and must be the work of a group within that Chapter, such as a raffle quilt, challenge piece, etc. Any size, any style of quilt accepted.

Stationary Machine: The quilt is moved by hand under a sewing machine to do the quilting.

Track-mounted Machine: The sewing machine is moved over the surface of the quilt to do the quilting.

Please note that quilt size is considered only in the Miniature category. Other categories are determined by the quilt's technique or intended use, not size.



The Following ribbons are awarded at the judges' discretion:

Best of Show - Bed Quilt

Best of Show - Wall Quilt

* **Best Hand Quilting** - Bed Quilt

* **Best Hand Quilting** - Wall Quilt

* **Best Machine Quilting** - Stationary machine

* **Best Machine Quilting** - Track-mounted machine

* **Note:** In the judging of these awards, both stitch production and quilting design are considered.

Six (6) Judges' Recognition

Color - Effective integration of color and design

Embellishment - Creative use of embellishment to enhance the quilt design

Traditional - Remarkable achievement in classic patterning

Exemplary Appliqué

Exemplary Piecework

First, Second, Third and Honorable Mention ribbons in each category

Meet the Faculty continued

Holice Turnbow, NQACJ, NQACT, Sturbridge, MA

A part of the national quilting scene since 1978, Holice lectures and conducts workshops in many techniques of quilting with emphasis on those subjects related to the development and use of quilting designs. This is an outgrowth of his work with The Stencil Company, for which he designs quilting stencils. Holice has served as a quilt consultant and designer to Spartex, Inc., developing designs for pre-printed wholecloth quilts; Benartex; and The Stencil Company. He is a retired co-curator of The Hoffman Challenge.

Sandy Turner, NQACT, Santa Maria, CA

www.sandyturner.com

Sandy has been teaching quilt making for the past 20 years. She was the NQA Teacher of the Year in 2004. She also founded the Santa Maria Valley Quilt Guild in 1991. Her article, "I Love the Fabric, But What Do I Do With It?" was published in QNM. She has taught at the Empty Spools Conferences in Asilomar, where she was honored to be selected as Artist in Residence in 2000. Sandy's quilts have been seen in shows and publications. Yearly she puts on a conference in Cambria, CA - Out of Hand and Heart, A Quilt Retreat.

POINTS OF INTEREST

Columbus and environs....

The Ohio Historical Society

www.ohiohistory.org

614-297-2300

Columbus Cultural Arts Center

www.culturalartscenteronline.org/home

614-645-7047

North Market

One block west of the Convention Center
www.northmarket.com

614-463-9664

Inniswood Metro Gardens

www.inniswood.org

614-895-6216

Franklin Park Conservatory and Chihuly Collection

www.fpconservatory.com

800-214-7275

Quilt Surface Design Symposium – June 1-10

www.qsds.com

Longaberger Homestead

www.longaberger.com/homestead.aspx

740-322-5588

Short North Area

One block north of the Convention Center
www.shorthnorth.org

614-229-8050

The Dairy Barn Arts Center

Quilting Traditions: The Art of the Amish
May 28 - September 6, 2010
www.dairybarn.org/exhibitions

740-592-4981

Show Survival Hints

1. Dress in layers; classroom/exhibit hall temperatures can fluctuate.
2. Bring your own water bottle.
3. Classroom tables are 24" wide; your working area will be approximately 2' x 3'; plan for this!
4. Label all of your tools – mats, rulers, cutters, scissors, totes, etc.
5. Wear comfortable shoes!!
6. **No wheeled shopping bags will be allowed in Exhibit Hall C.** Unfortunately, they pose a very real hazard. However, Sack Sitters will be available to store your personal belongings and purchases just inside the Hall C entrance.

MEMBERSHIP - THE NATIONAL QUILTING ASSOCIATION, INC.

- 1-year renewal - \$25** **2-year renewal - \$45**
 NEW 1-year - \$25 **NEW 2-year - \$45**
 Canadian ___\$32 ___\$59 **Intl. ___\$40 ___\$75**
 Ck# _____ **Charge** [complete information on registration form]

Please print or type all requested information, even if it is the same as your mailing label.

NQA ID# _____ EXP: _____ NQA Chapter _____

Name _____

Address _____

City, State, Zip _____

Phone* _____ E-mail* _____

* For NQA office use only

NQA - PO Box 12190 - Columbus, OH 43212-0190
 614-488-8520 nqaquilts@sbcglobal.net www.nqaquilts.org

SHOW 2010

Use this form to renew or begin an NQA membership in conjunction with your 2010 show registration. Cut out or copy and attach to your Registration Form.

On the Registration Form, remember to add your membership dues to the total registration payment on the line provided.

Include payment for:
 All show-related items
 Membership dues
 Registration fee

Membership Forms are forwarded to the office, so ALL information must be complete.

BUS TOUR RESERVATION
 (Please type or print information below)

Tour date(s) Thursday, June 17 Friday, June 18 Saturday, June 19 [circle date(s)]

Bus Group Name _____

City, State _____

Contact/Group Leader _____

Phone (day) _____ (evening) _____

(cell) _____ E-mail _____

ADMISSION:	# of people		cost per person	TOTAL
1-29 people (1 day)	_____	X	\$10.00	\$ _____
30+ people (1 day)	_____	X	\$ 9.00	\$ _____
1-29 people (2 days)	_____	X	\$20.00	\$ _____
30+ people (2 days)	_____	X	\$18.00	\$ _____
1-29 people (3 days)	_____	X	\$25.00	\$ _____
30+ people (3 days)	_____	X	\$22.00	\$ _____

METHOD OF PAYMENT:

Check Check # _____ Amount enclosed _____

Credit Card (Circle type) VISA MasterCard

Card Number _____ Exp. Date _____

Cardholder's Name _____

Cardholder's Signature _____

Send form with payment to: NQA 2010 Bus Tours
 BEFORE June 7, 2010 14114 E. Milton Ct., Scottsdale, AZ 85262

Use this form to pre-register your bus group visit to the NQA Show.

Cut out or copy and MAIL, before June 7, 2010, to:
 NQA Bus Tours
 14114 E. Milton Ct.
 Scottsdale, AZ 85262

Your group will be met and provided with admission wristbands and show books. You will then be able to go directly into the show – no waiting in line!

For additional information, call 480-683-2331 or e-mail bustours@nqaquilts.org.

Additional Forms

Volunteer (Helping Hands) Information

Please type or print all information.

Yes, I will volunteer to help at the 41st Annual NQA Quilt Show in Columbus, Ohio – June 17-19, 2010.

Name _____

Address _____

City, State, Zip _____

Phone _____

E-mail _____

NQA member ID# _____ (if applicable)

Please number in order of preference **all** time slot(s) for which you would like to volunteer – here and in the next section.

Thursday, June 17	White Glove	Door Monitor
8:45 – 11:15 A.M.	_____	_____
11 A.M. – 1:30 P.M.	_____	_____
1:15 – 3:45 P.M.	_____	_____
3:30 – 6 P.M.	_____	_____
Friday, June 18		
8:45 – 11:15 A.M.	_____	_____
11 A.M. – 1:30 P.M.	_____	_____
1:15 – 3:45 P.M.	_____	_____
3:30 – 6 P.M.	_____	_____
Saturday, June 19		
8:45 – 11:15 A.M.	_____	_____
11 A.M. – 1:30 P.M.	_____	_____
1:15 – 3:45 P.M.	_____	_____
3:30 – 6 P.M.	_____	_____

Please check box if you have a special need that requires sitting.

Additional opportunities for volunteering:

Wednesday, June 16 – white glove for Preview 6:45 – 9:15 p.m. _____

Wednesday, June 16 – door monitor for Preview 6:45 – 9:15 p.m. _____

Sack Sitters

	Thur, June 17	Fri, June 18	Sat, June 19
8:45 – 11:15 A.M.	_____	_____	_____
11 A.M. – 1:30 P.M.	_____	_____	_____
1:15 – 3:45 P.M.	_____	_____	_____
3:30 – 6 P.M.	_____	_____	_____

Remember to arrive 15 minutes prior to your shift to check in.

Contact for any questions: volunteers10@nqaquilts.org

Fill out and mail this form to: NQA Show Volunteers
PO Box 12190
Columbus, OH 43212

Thank you for supporting the show!

Little Quilt Auction Entry Form

Please fill out completely and legibly

Name of Quiltmaker _____

Address _____

City, State, Zip _____

DayPhone _____ Eve. Phone _____

E-mail _____

Name of Quilt _____

Size (W) _____ (L) _____

Short Description of Item _____

Mail completed form with your quilt to: NQA - LQA
4380 Allen Drive
Columbus, OH 43213

Thank you for the quilt!

Tree Quilts Special Exhibit

Please fill out completely and legibly

Name of Owner _____

Address _____

City, State, Zip _____

DayPhone _____ Eve. Phone _____

E-mail _____

Name of Quilt _____

Name of Maker _____

Size (W) _____ (L) _____

Short Description of Item _____

Mail completed form **with photo** to:
NQA Entries - Tree Quilts
1403 10th St.
Harlan, IA 51537

40 quilts will be accepted. No entry fee is required.
Quilts will be return shipped by NQA.

Special Exhibit entry forms with photos must be received by May 1, 2010.

Thank you for sharing!



Place
Postage
Here

The National Quilting Association, Inc.
P.O. Box 12190
Columbus, OH 43212-0190
Phone 614-488-8520
Fax 614-488-8521
E-mail nqaquilts@sbcglobal.net
Web site www.nqaquilts.org

Thank You to Our Sponsors



Vendor Sponsors



- Accomplish Quilting
- A Piece in Time
- A Quilter's Dream
- A Very Special Collection
- Best Friends Quilt Shoppe
- Handi-Quilter
- i-bead.com



- Maine-ly Sewing
- Nana's Needlework
- Nancy J's Fabrics
- Olfa - Charlie's E-Z Mat
- Original Creations / MJP Designs
- Quilting Books Unlimited
- Rebecca Barker's Quiltscapes
- Silver Thimble
- The Quilting Squares
- The Stencil Company



and Red Rooster Quilts

